

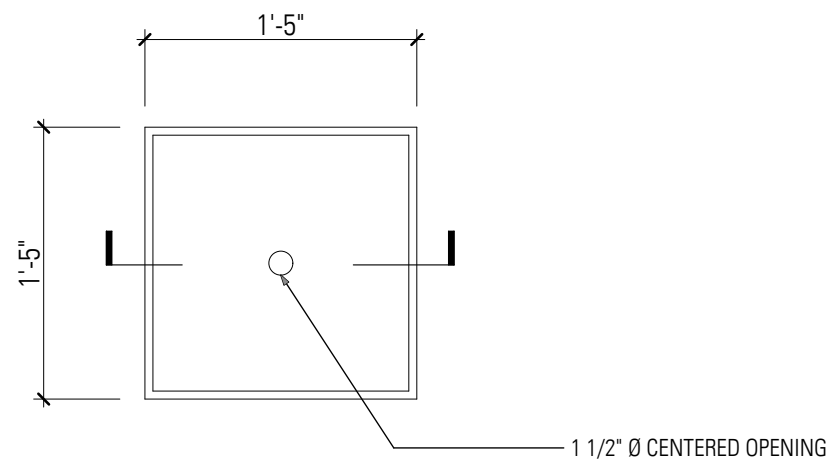
SK 1

DETAIL: PLYWOOD FLUO. LIGHT FIXTURE, 11 UNITS

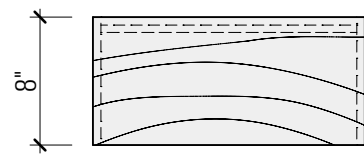
SCALE: 1" = 1'-0"

DATE: 2009-06-19

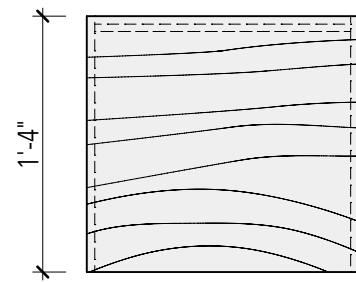
VOITURE12
(323) 702 96 69



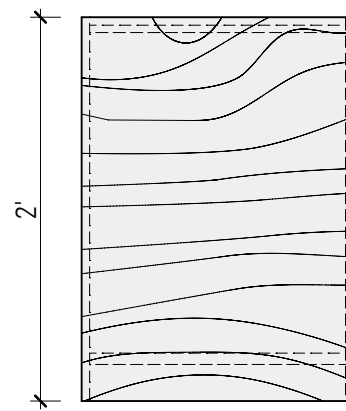
PLAN VIEW



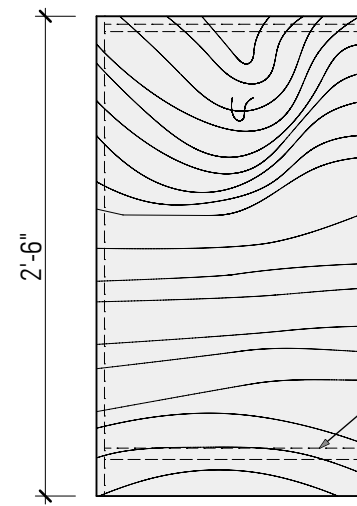
8" MODEL (4x)



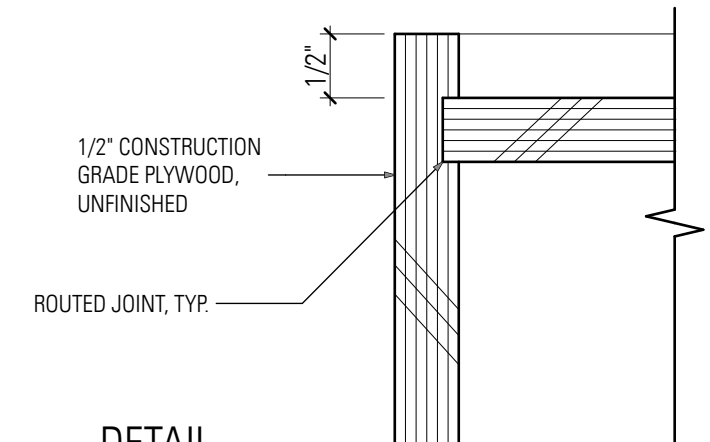
16" MODEL (3x)



24" MODEL (2x)

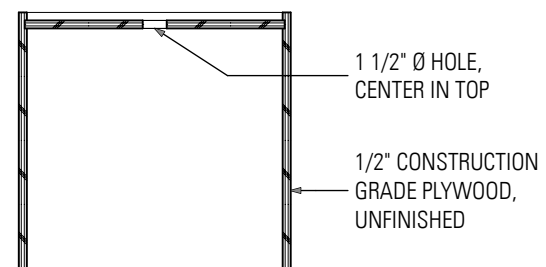


30" MODEL (2x)

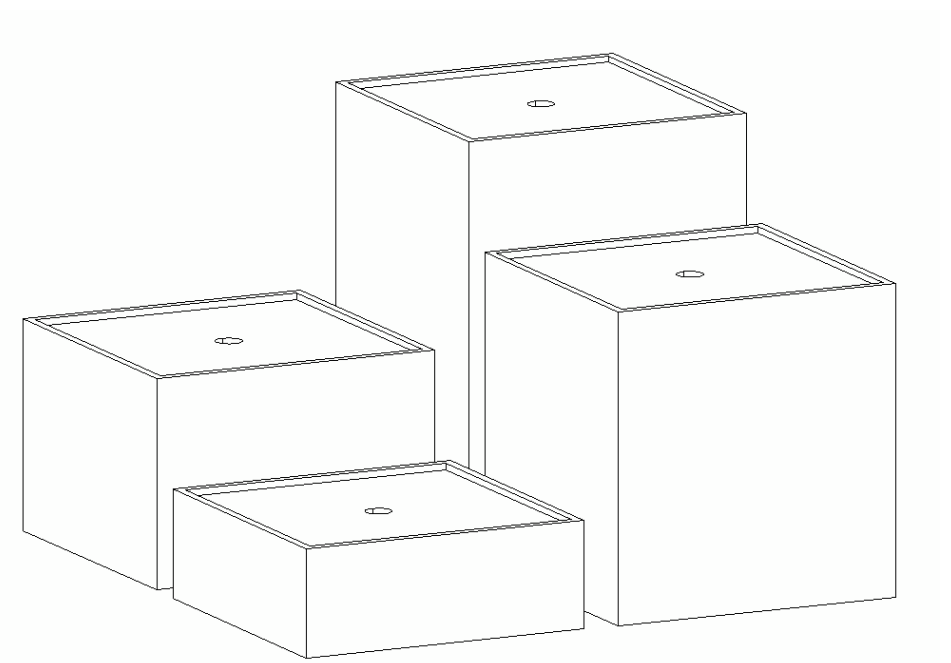


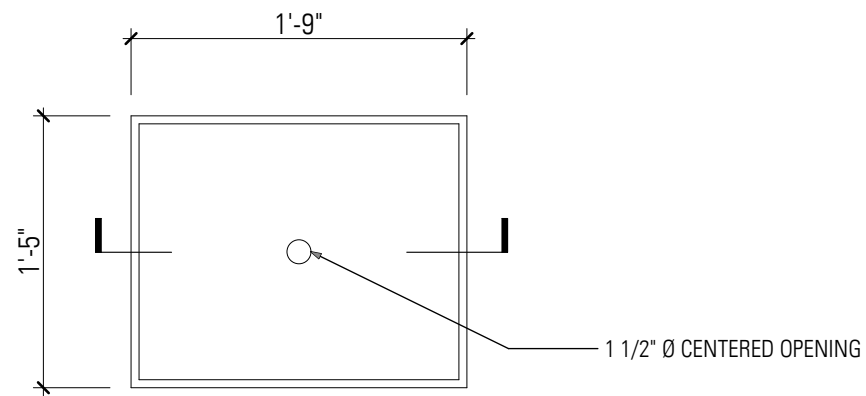
DETAIL

WEIGHT BASE W/ 3/4" PLYWOOD INSERT TO PREVENT EASY TIPPING

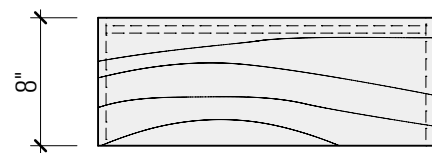


SECTION

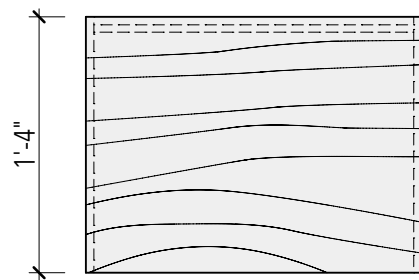




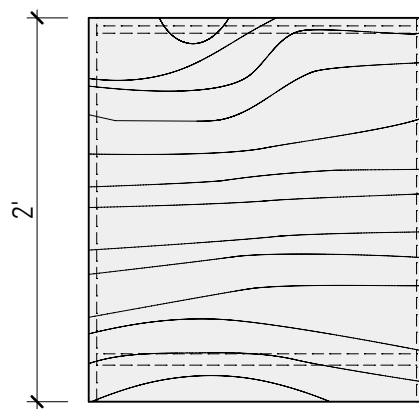
PLAN VIEW



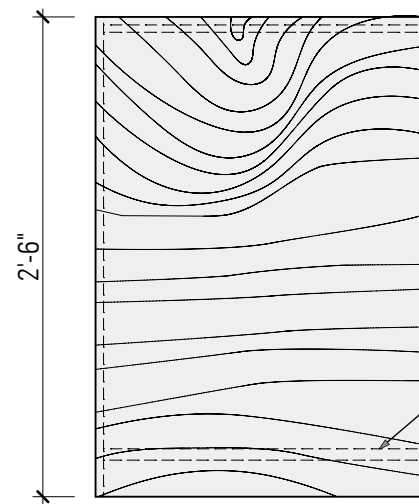
8" MODEL (4x)



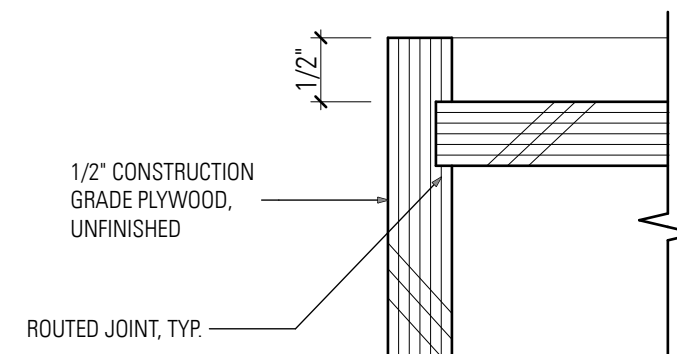
16" MODEL (3x)



24" MODEL (2x)

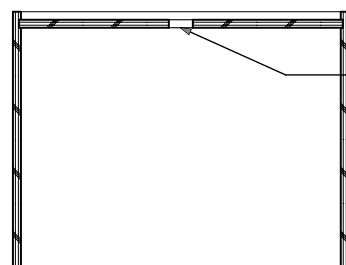


30" MODEL (2x)

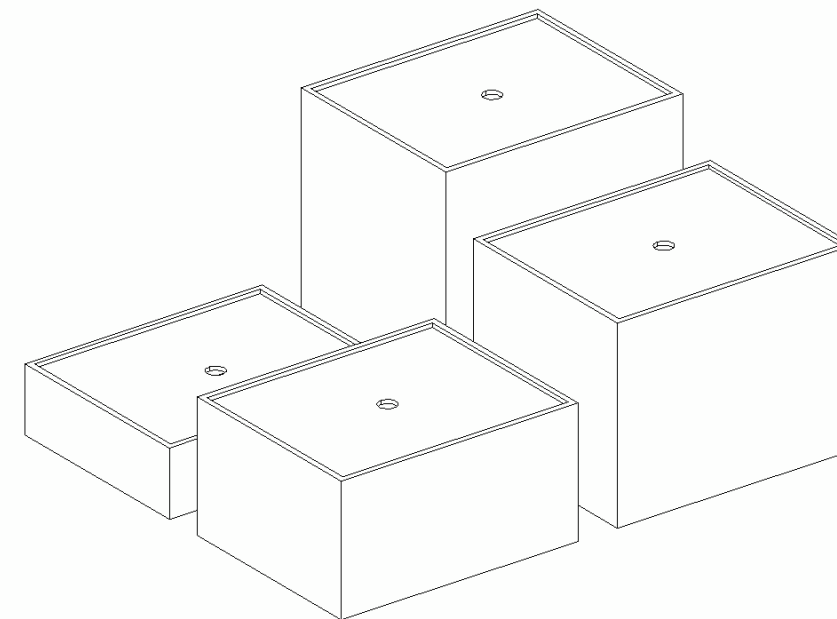


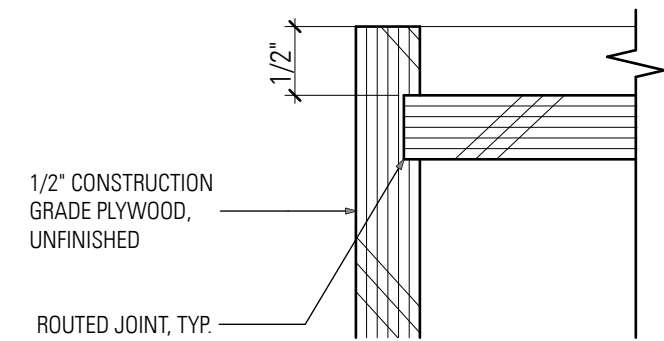
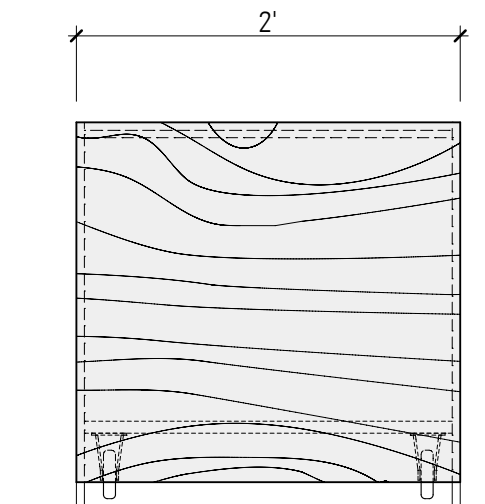
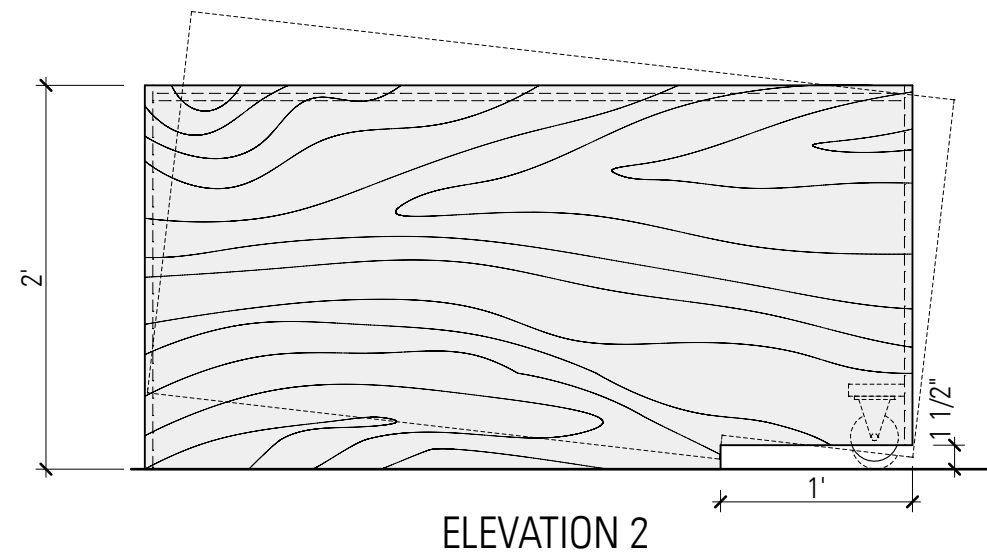
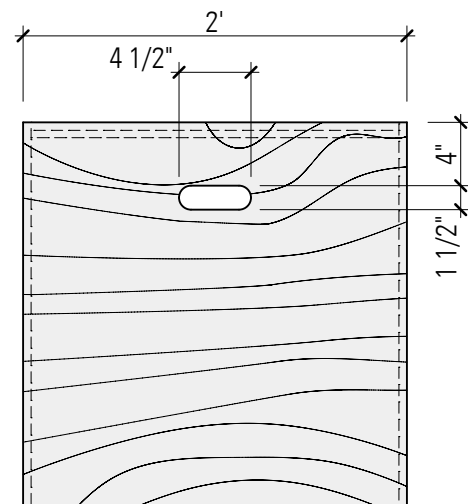
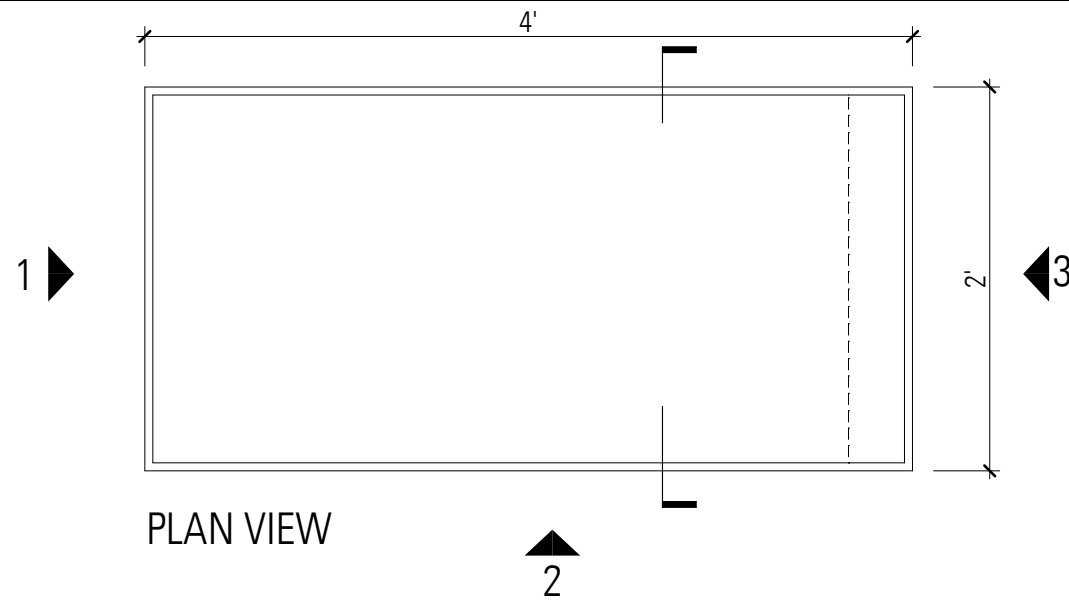
DETAIL

WEIGHT BASE W/ 3/4" PLYWOOD INSERT TO PREVENT EASY TIPPING

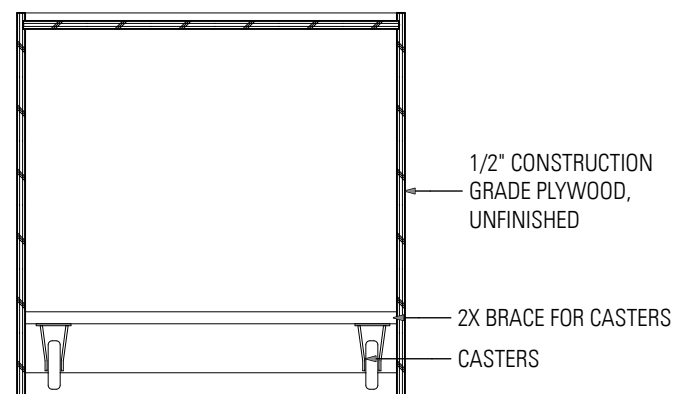


SECTION

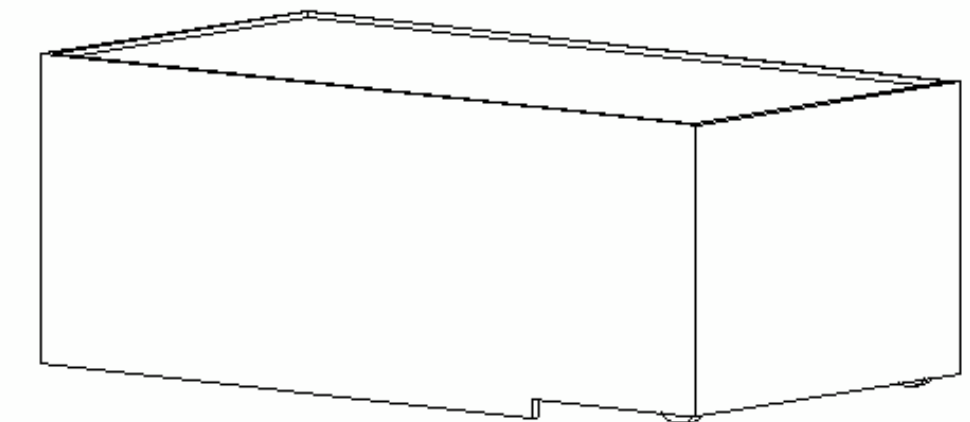




DETAIL



SECTION



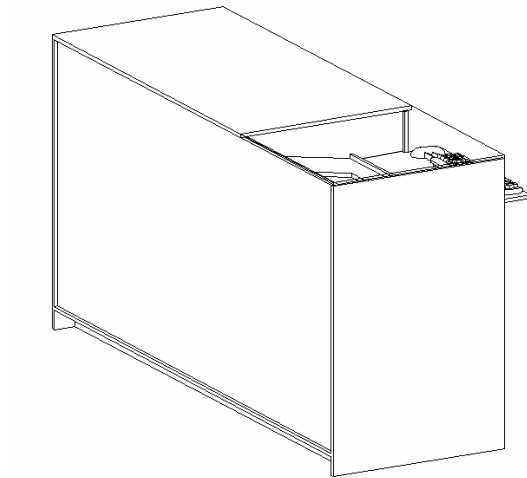
SK 3

DETAIL: PLYWOOD ACCESSORIES DISPLAY PLATFORM, 2 UNITS

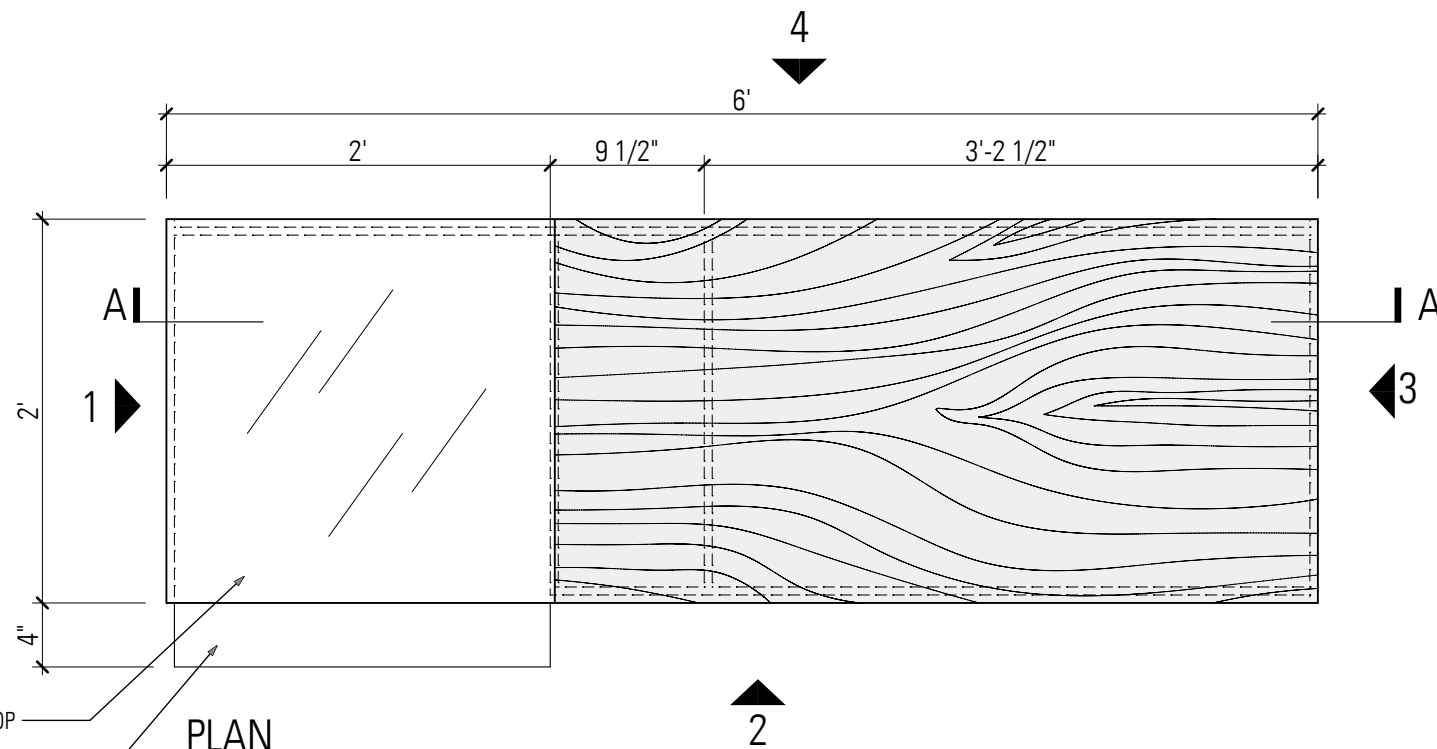
SCALE: 1" = 1'-0"

DATE: 2009-06-19

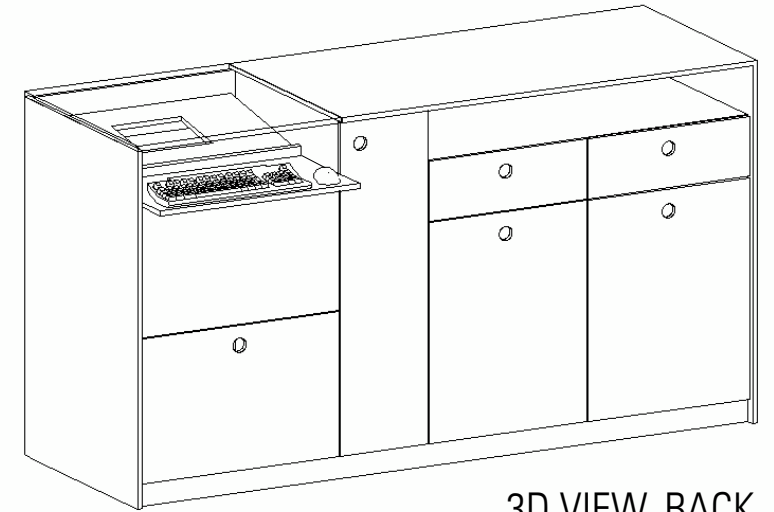
VOITURE12
(323) 702 96 69



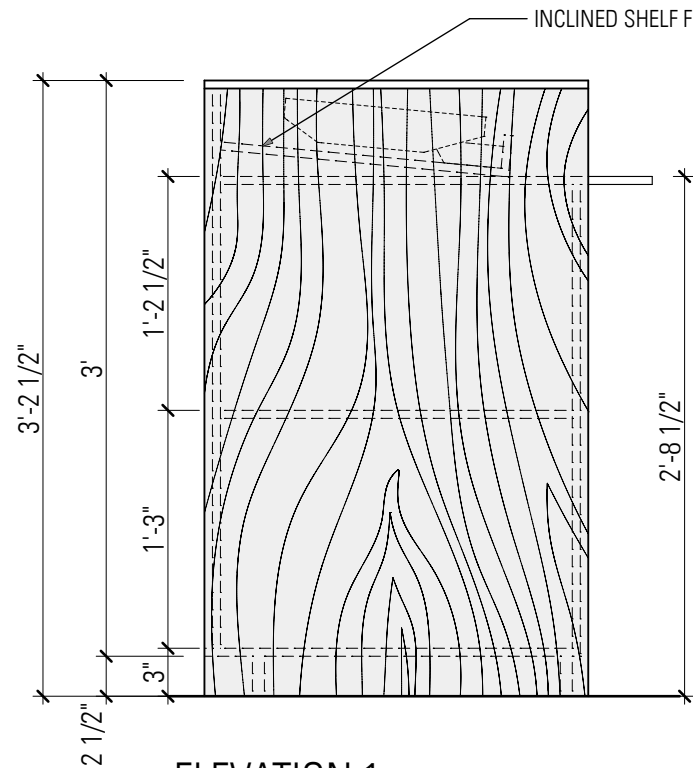
3D VIEW, FRONT



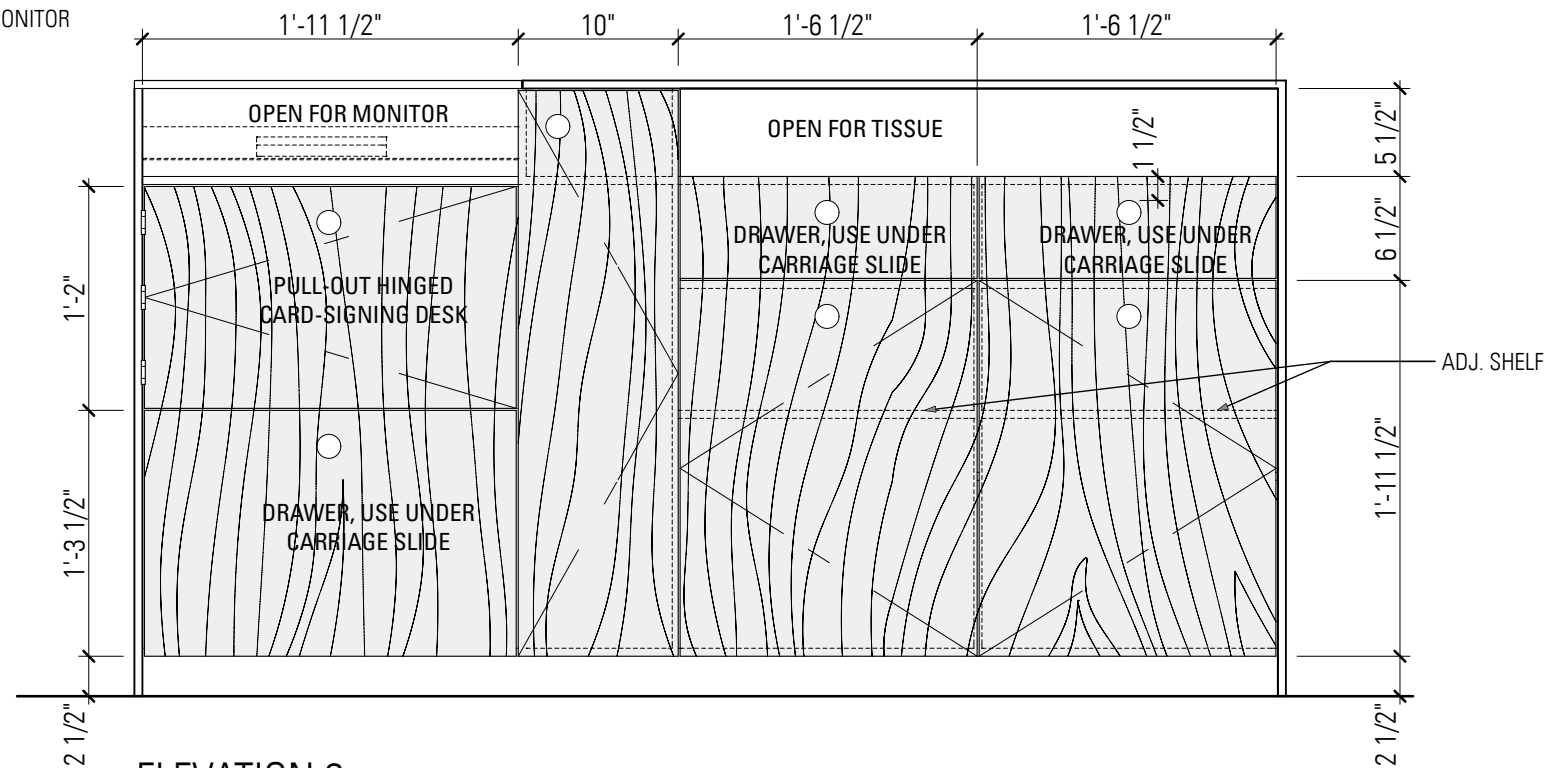
PLAN



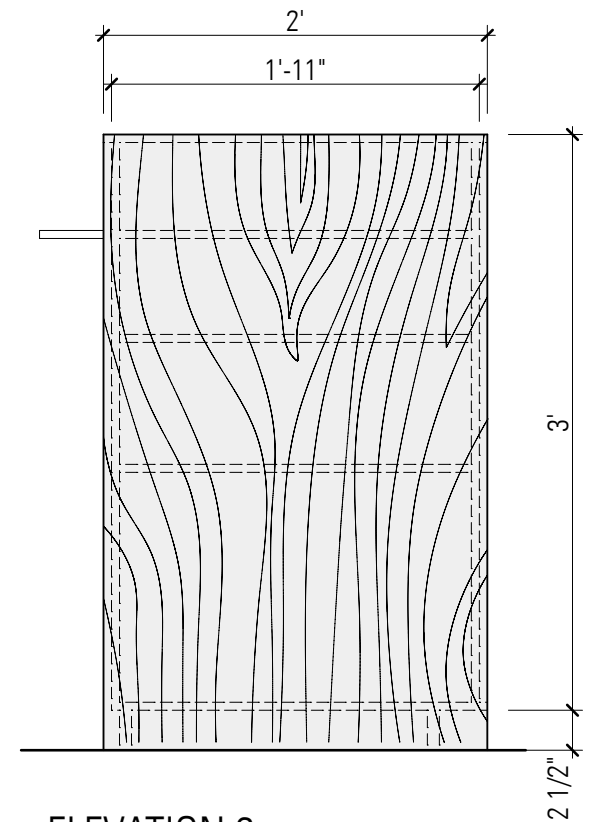
3D VIEW, BACK



ELEVATION 1



ELEVATION 2



ELEVATION 3

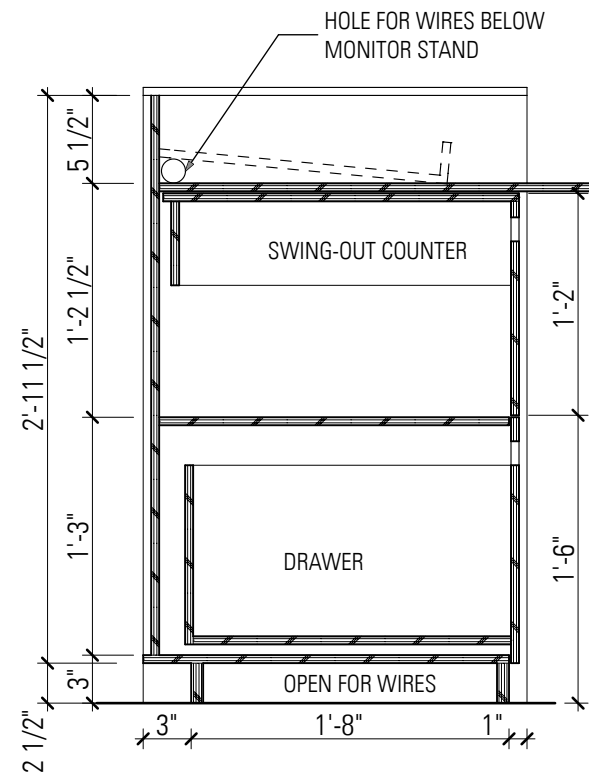
SK 4-A

DETAIL: PLYWOOD CASH WRAP, 1 UNIT

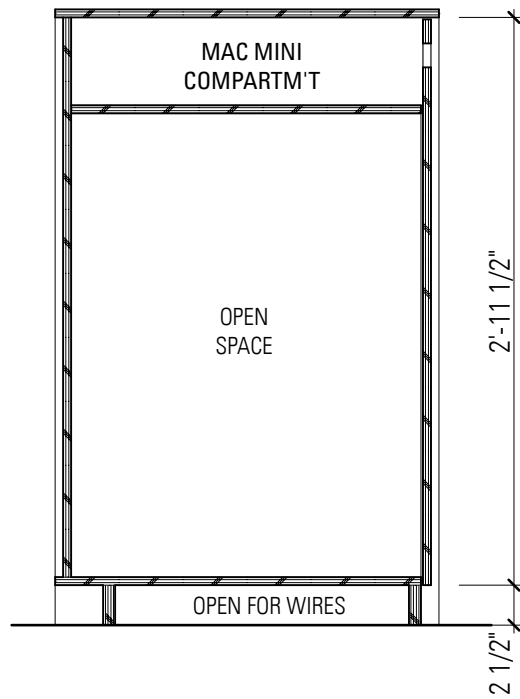
SCALE: 1" = 1'-0"

DATE: 2009-06-19

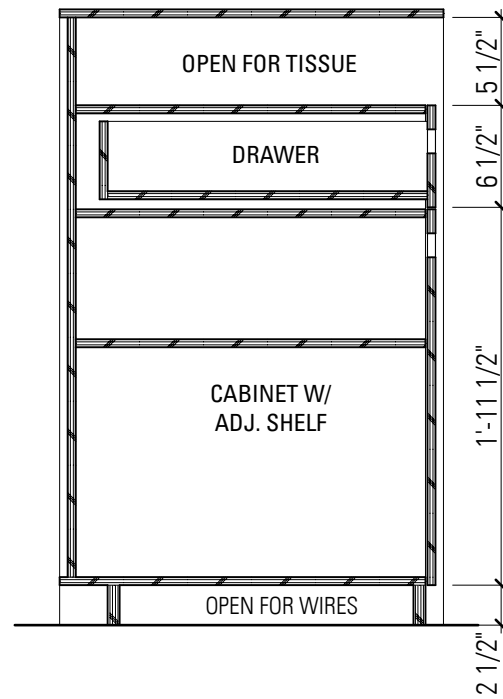
VOITURE 12
(323) 702 96 69



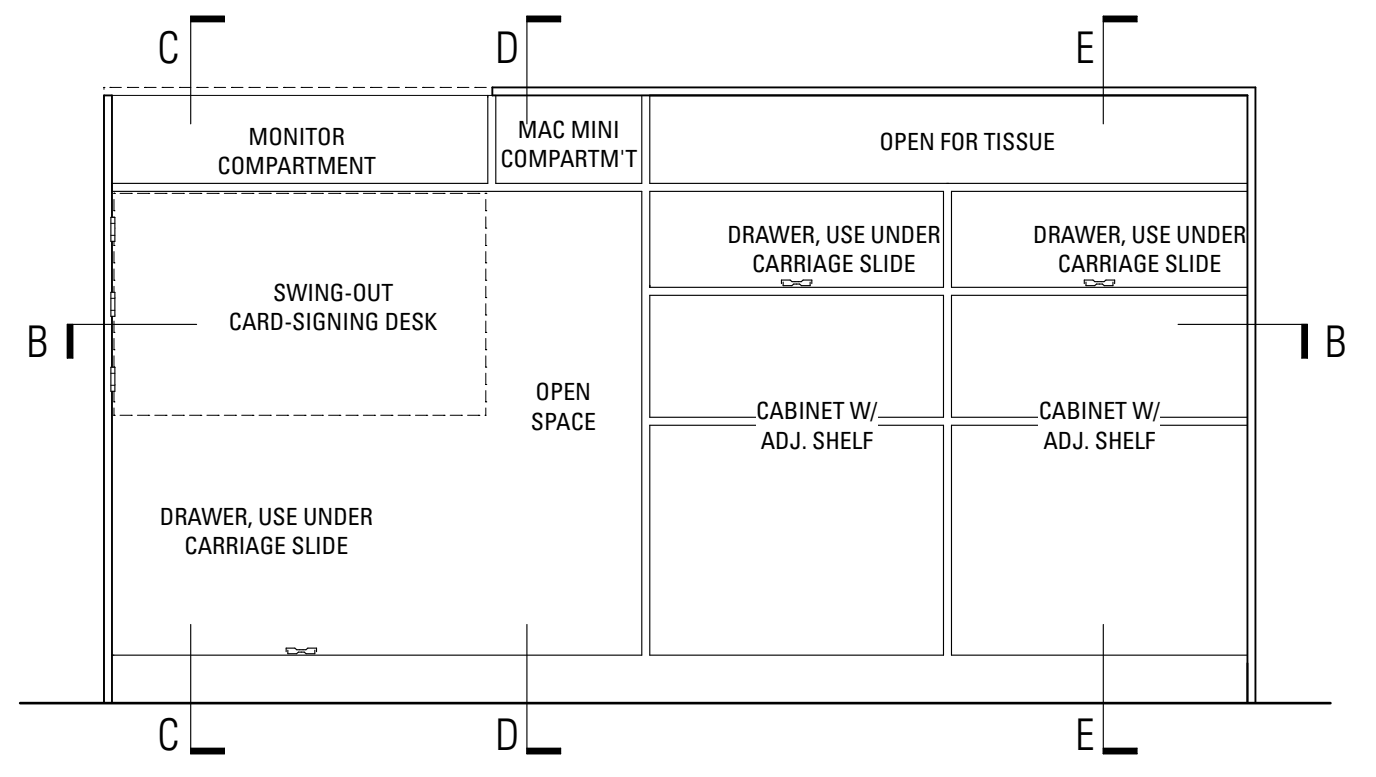
SECTION CC



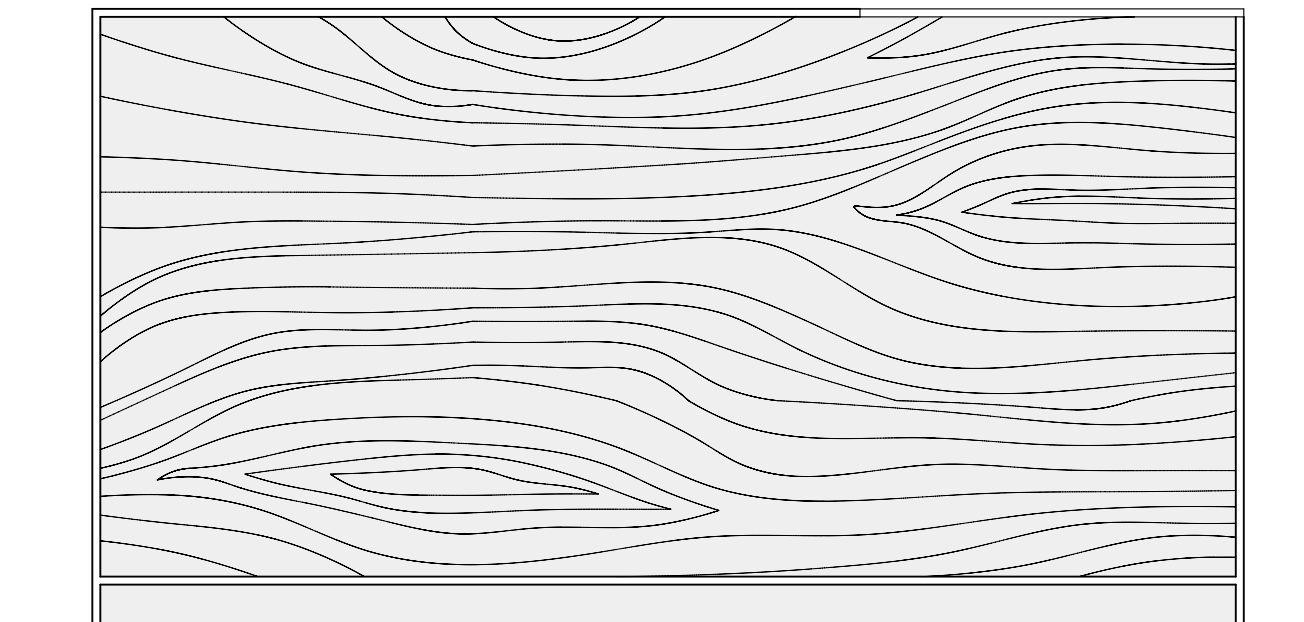
SECTION DD



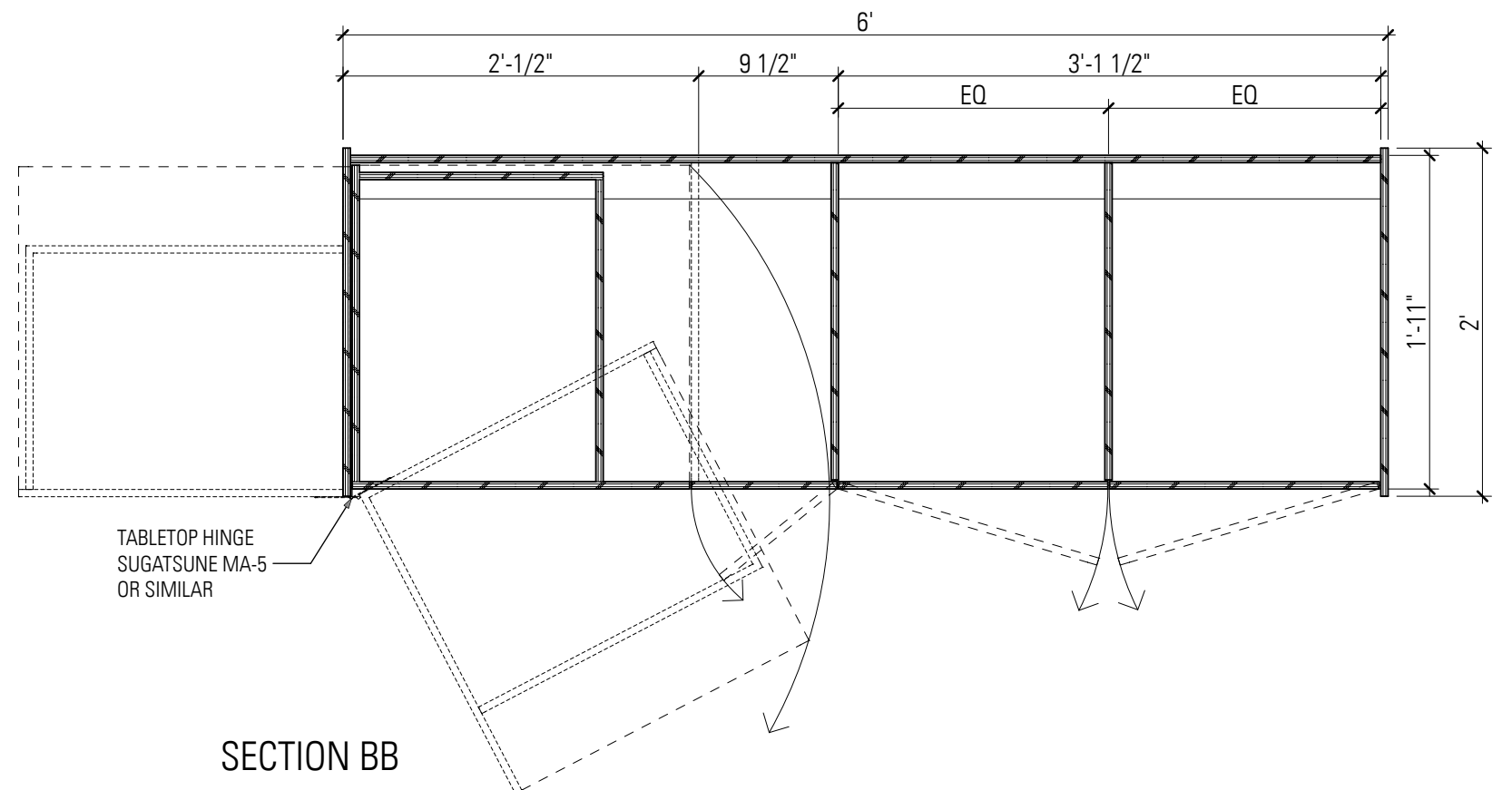
SECTION EE



SECTION AA (PLYWOOD BOX ONLY)



ELEVATION 4



SECTION BB

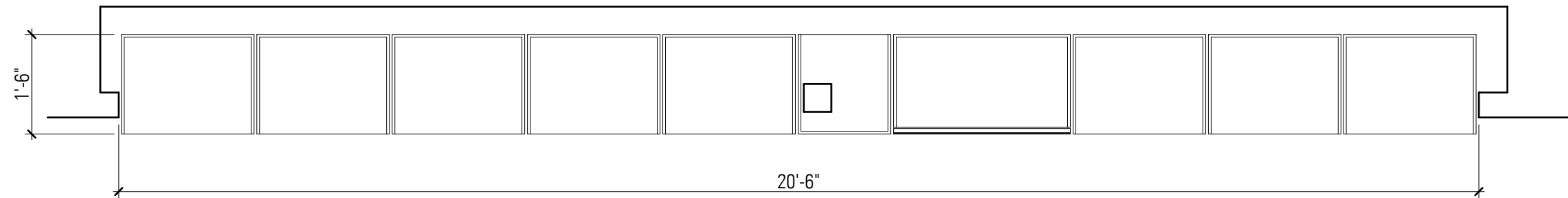
SK 4-B

DETAIL: PLYWOOD CASH WRAP

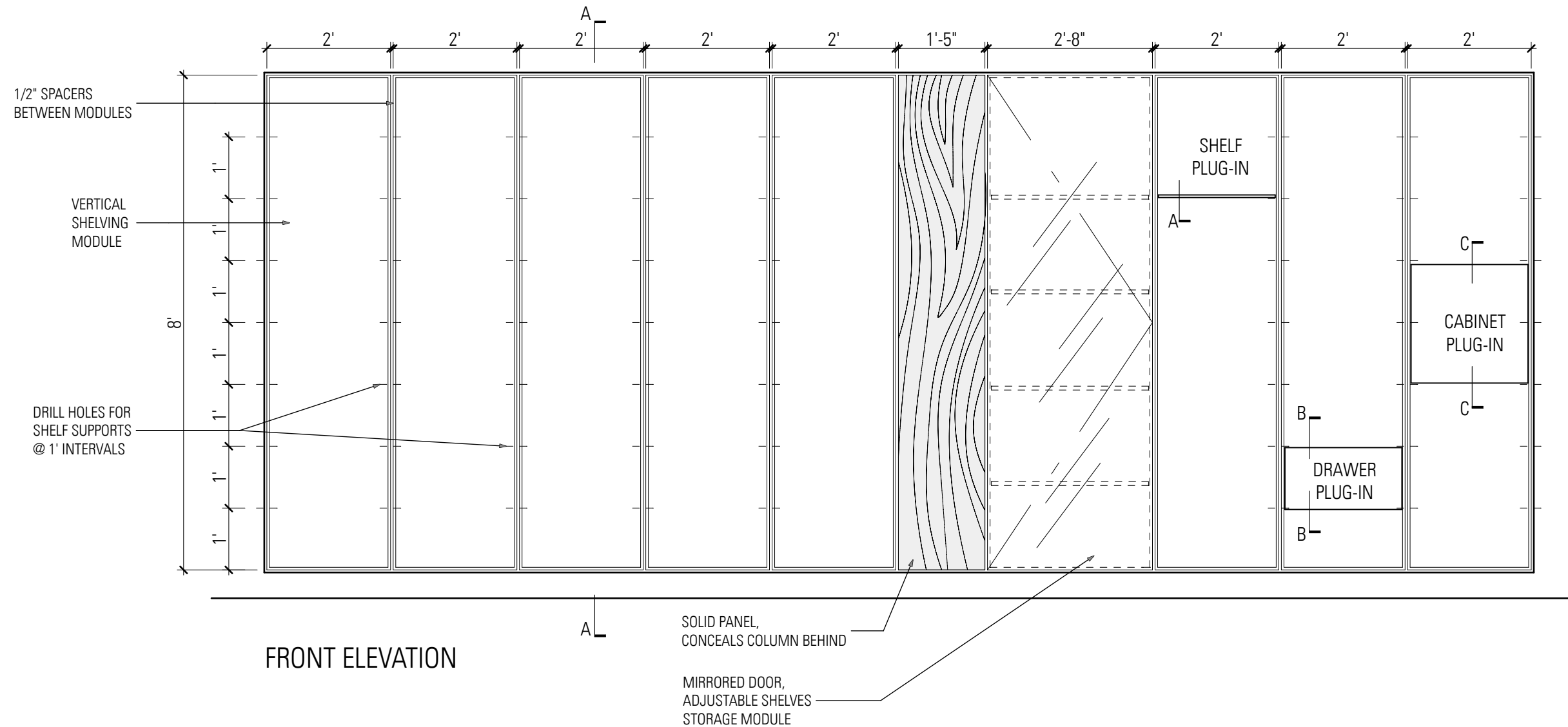
SCALE: 1" = 1'-0"

DATE: 2009-06-19

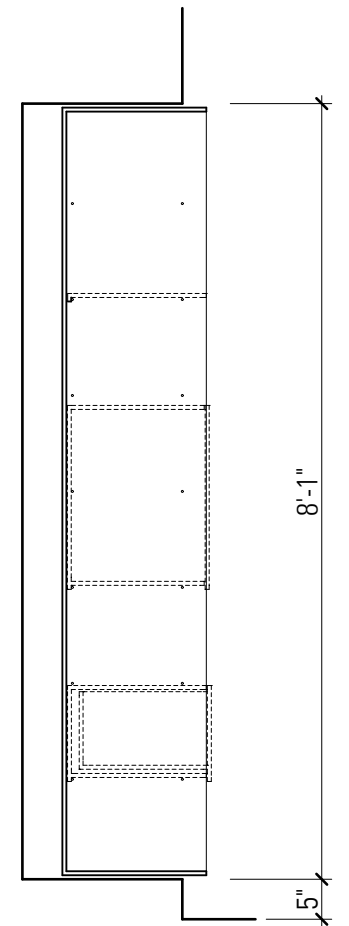
VOITURE 12
(323) 702 96 69



PLAN



FRONT ELEVATION



SECTION AA

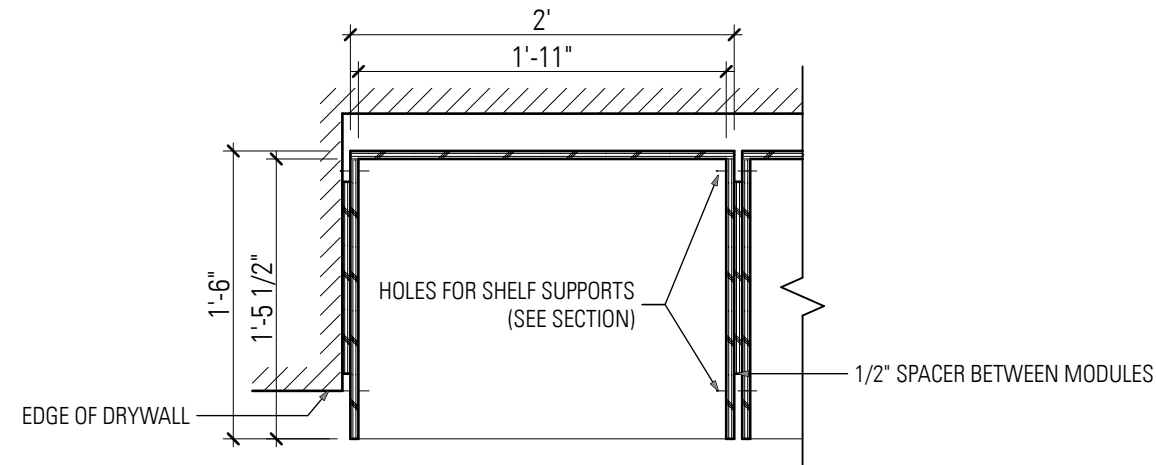
SK 5-A

DETAIL: PLYWOOD MODULAR SHELVING WALL, 1 UNIT TOTAL

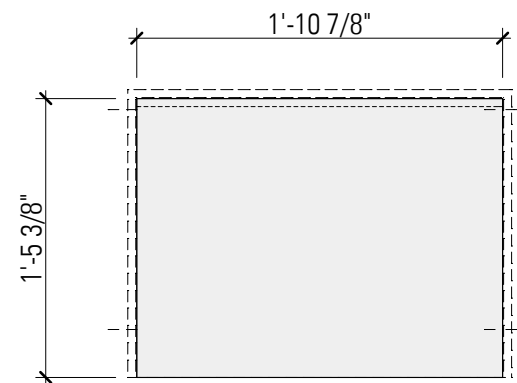
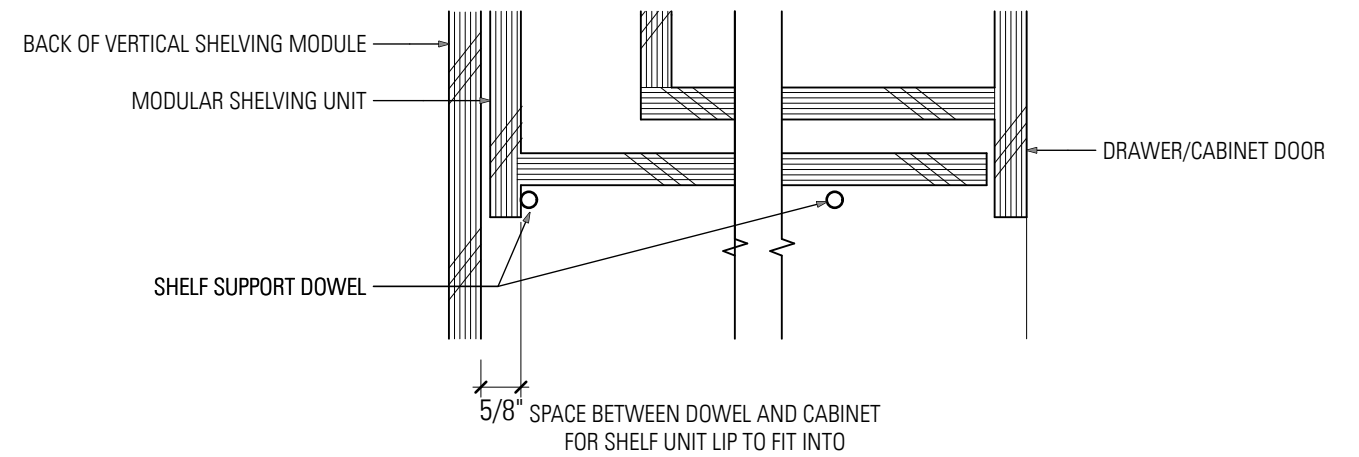
SCALE: 1/2" = 1'-0"

DATE: 2009-06-19

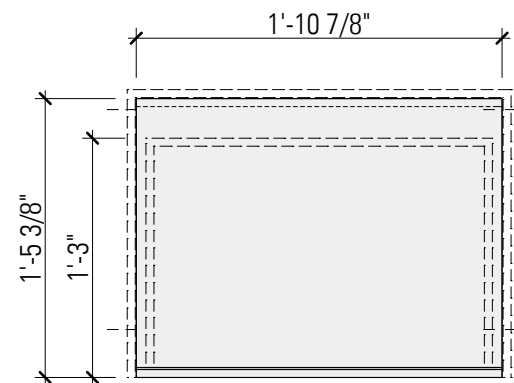
VOITURE12
(323) 702 96 69



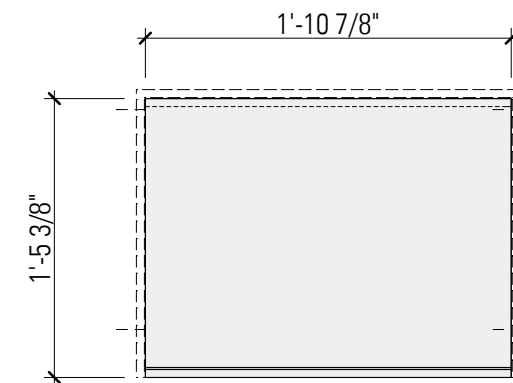
VERTICAL SHELVING MODULE, PLAN



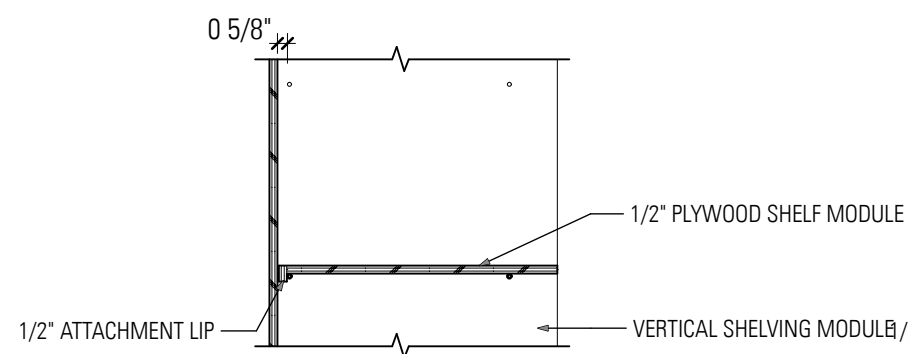
SHELF, PLAN



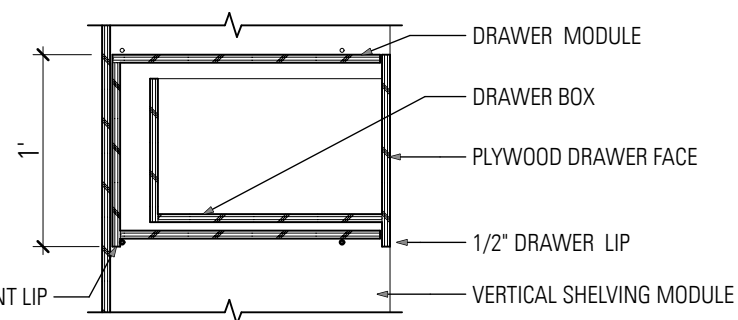
DRAWER, PLAN



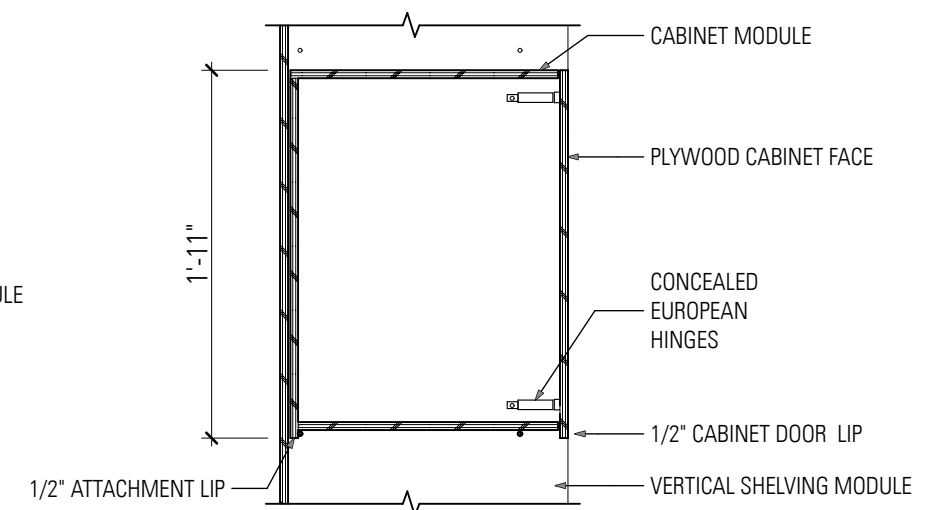
CABINET, PLAN



SHELF, SECTION AA (18 UNITS)



DRAWER, SECTION BB (4 UNITS)



CABINET, SECTION CC (4 UNITS)

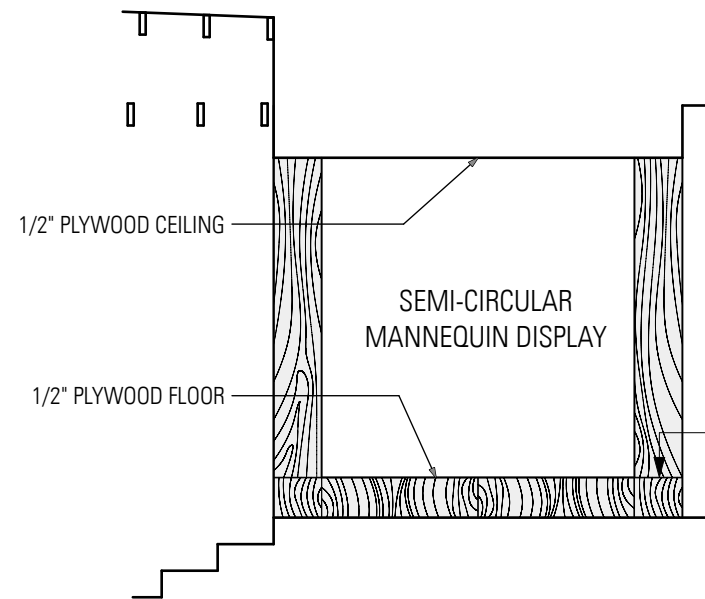
SK 5-B

DETAIL: PLYWOOD MODULAR SHELVING WALL "PLUG-INS", 26 UNITS TOTAL

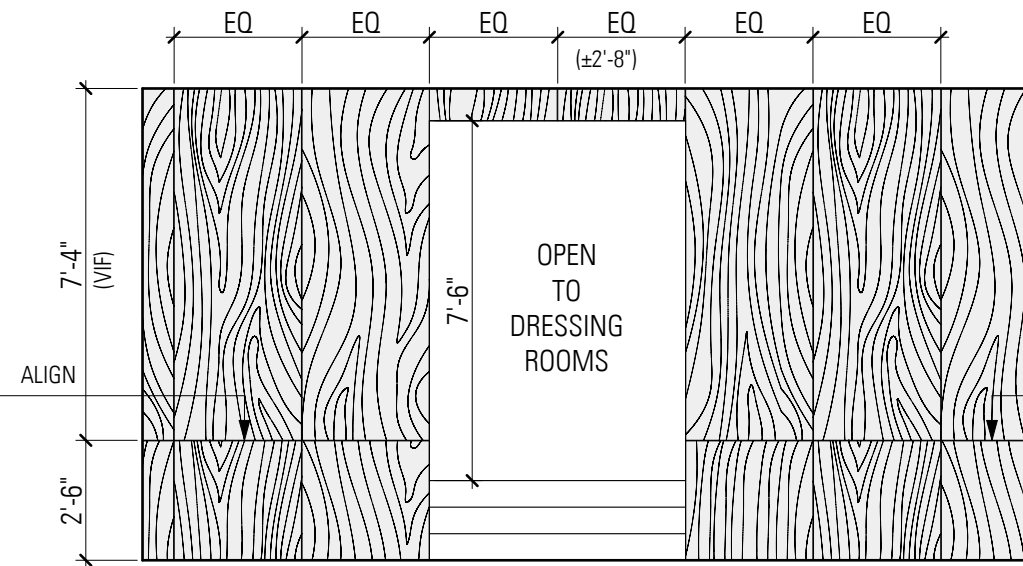
SCALE: 1" = 1'-0"

DATE: 2009-06-19

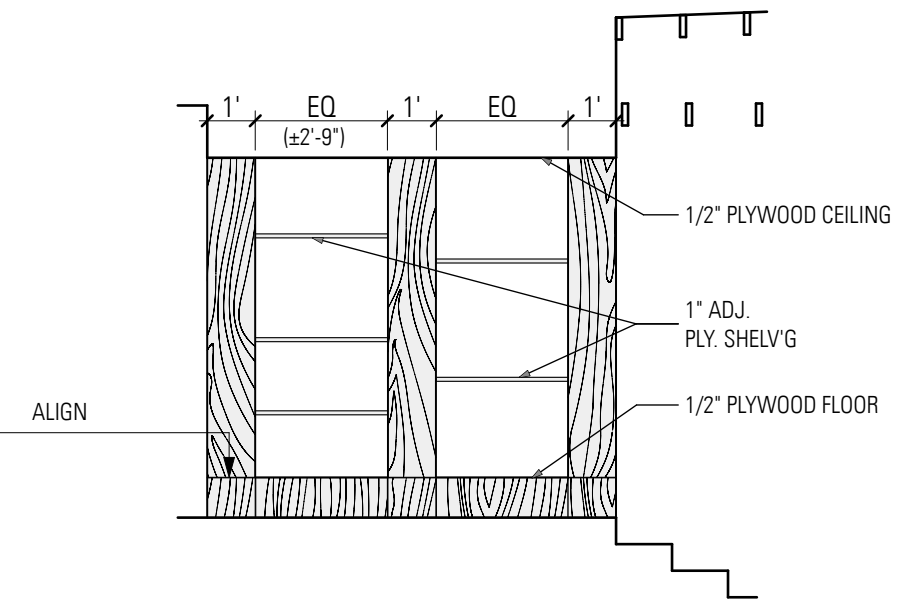
VOITURE12
(323) 702 96 69



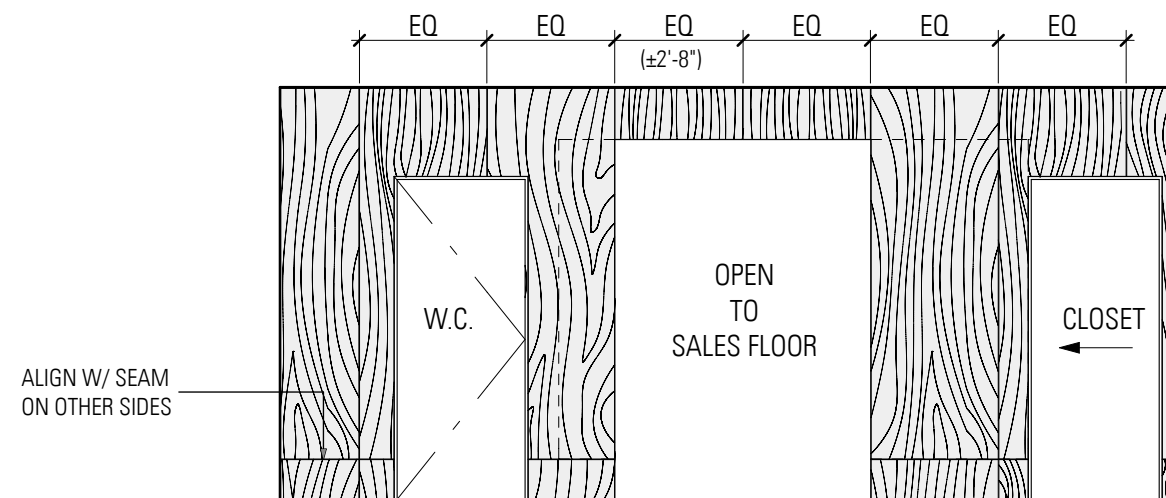
ELEVATION FACING ACCESSORIES WALL



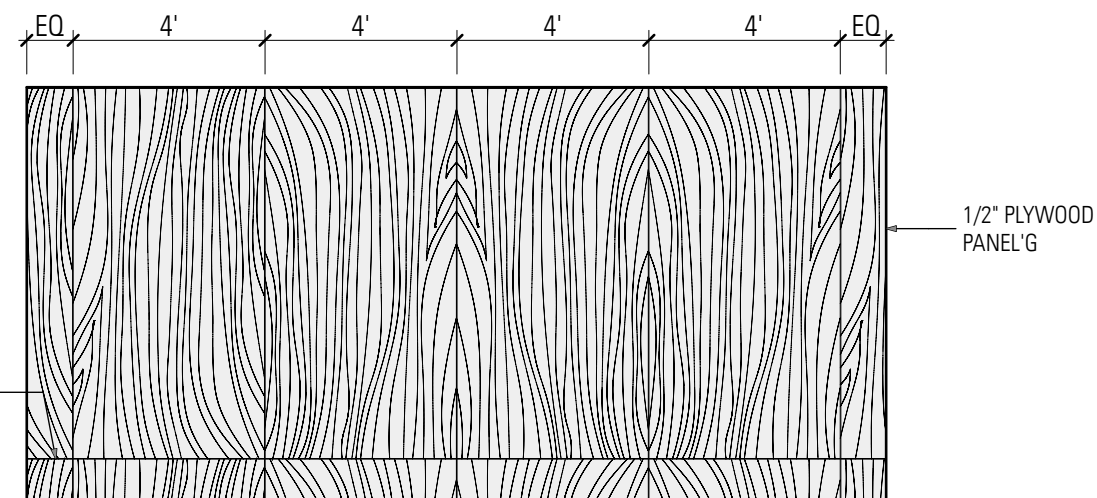
ELEVATION FACING SALES FLOOR



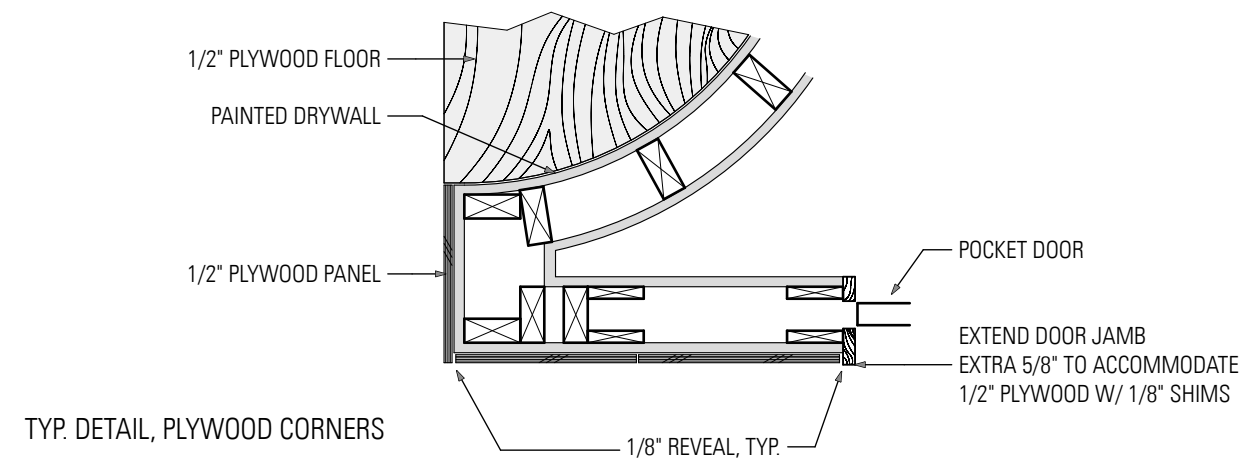
ELEVATION FACING MANNEQUIN DISPLAY

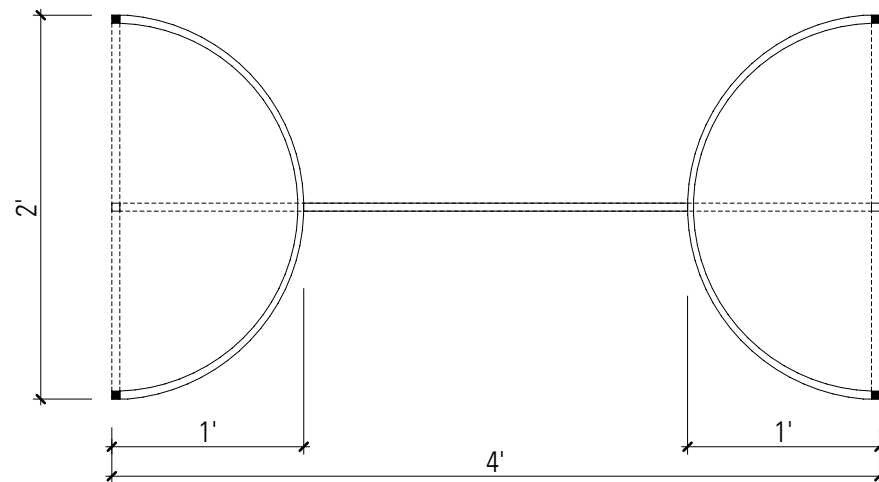


ELEVATION FACING MIRROR WALL IN FITTING ROOM

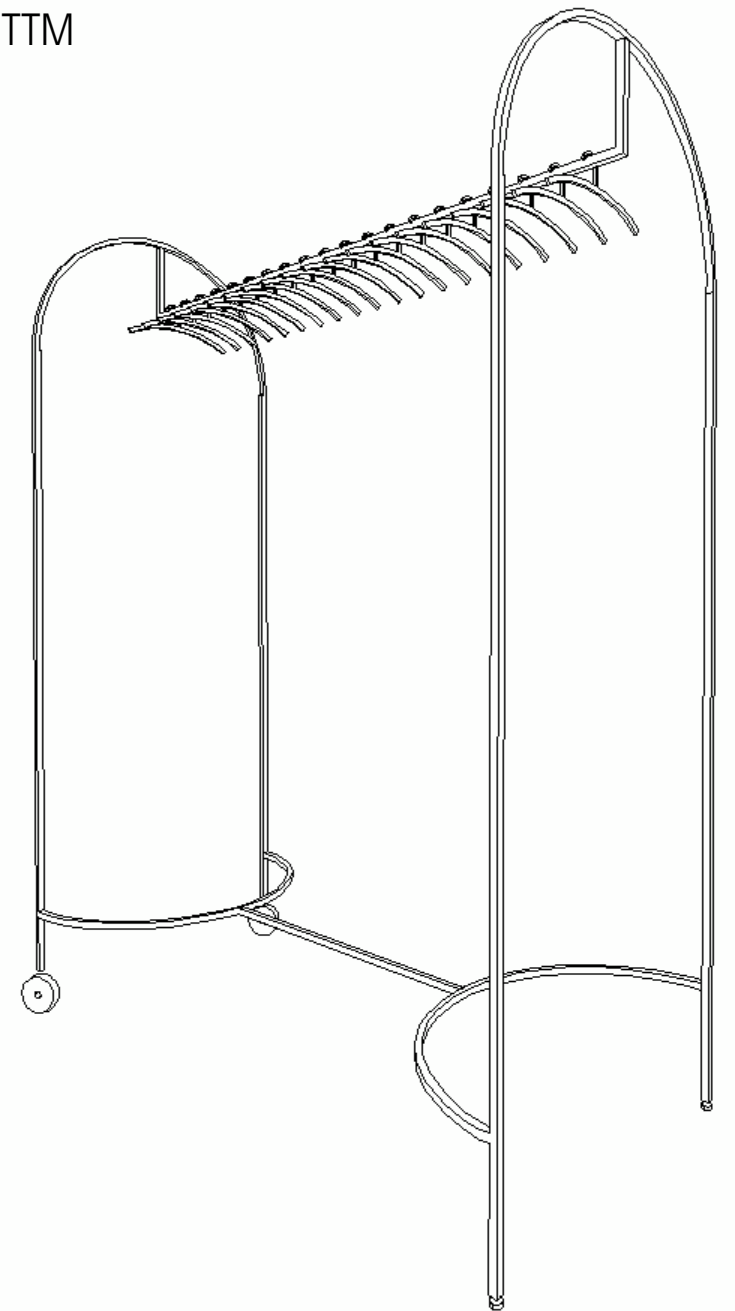
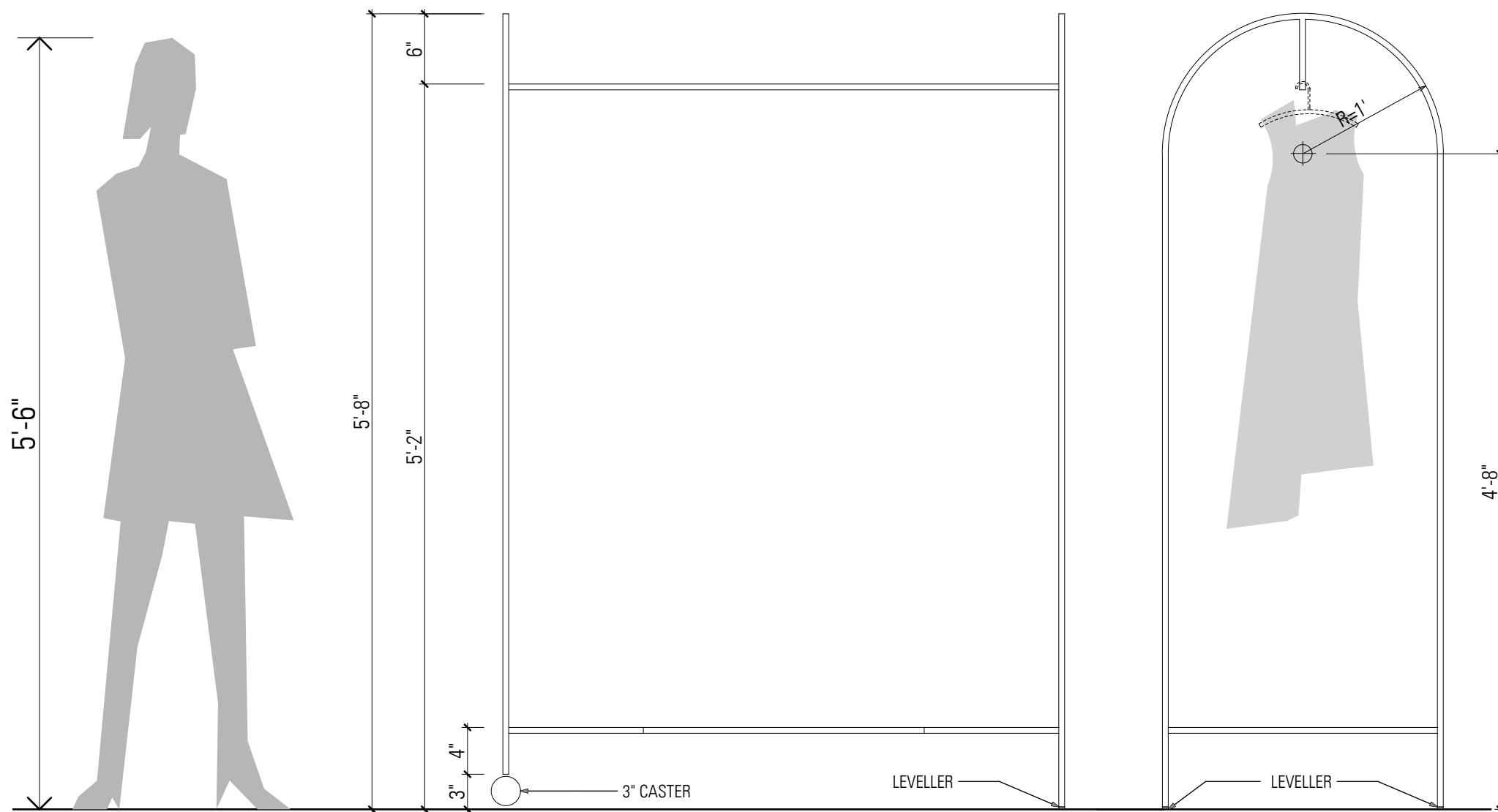


ELEVATION FACING WINDOWS IN FITTING ROOM





POWDER COATED 1/2" SQUARE TUBE
W/ TAPPED THREADED HOLES AT BTTM
TO ACCEPT CASTERS



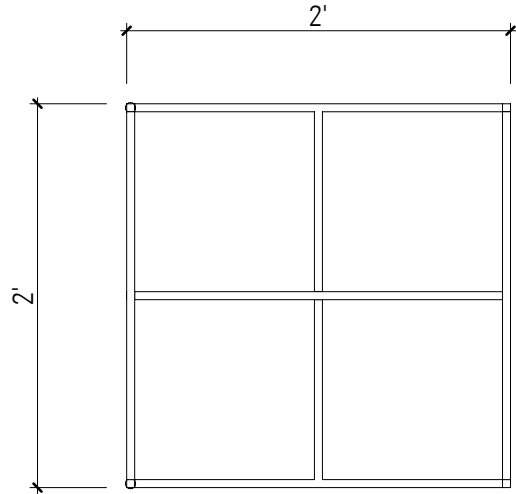
SK 7-A

DETAIL: ROLLING RACK, ROUND, 15 UNITS

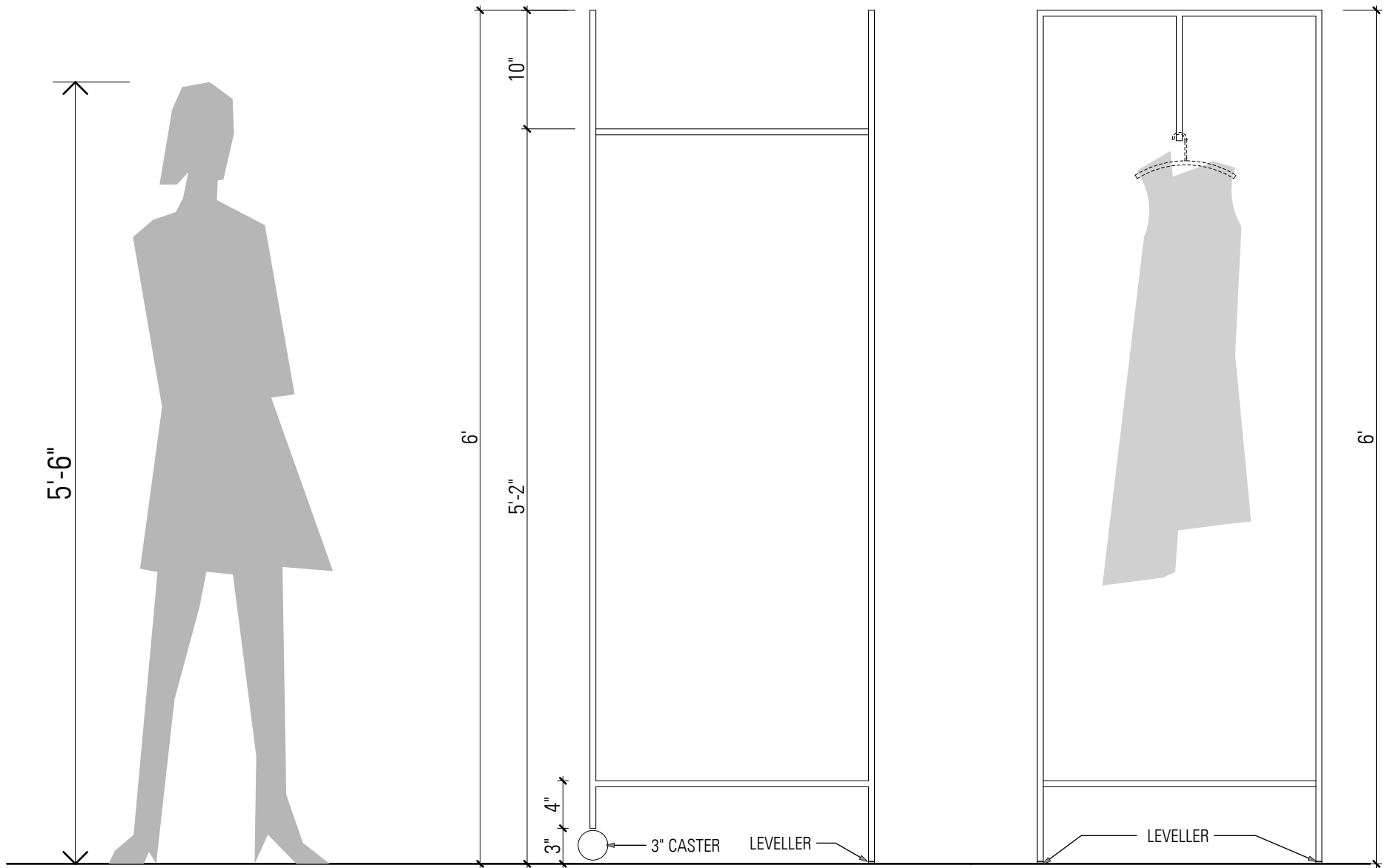
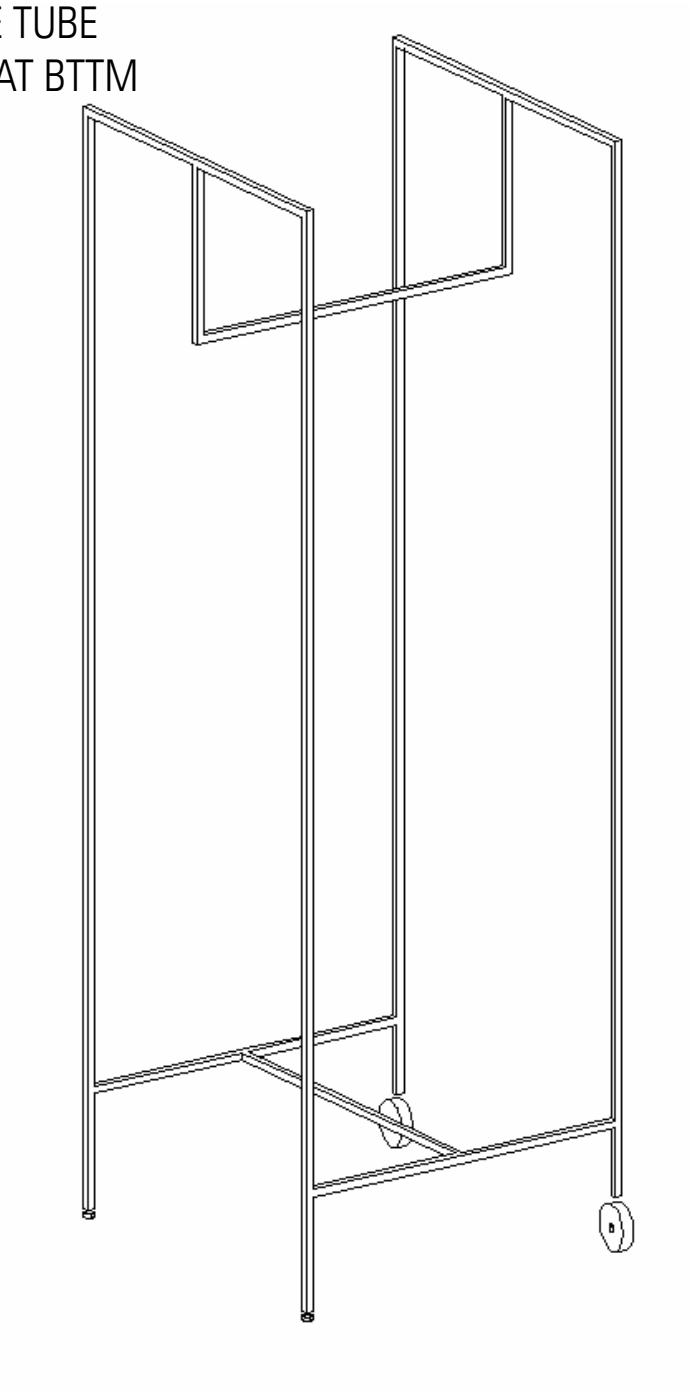
SCALE: 1" = 1'-0"

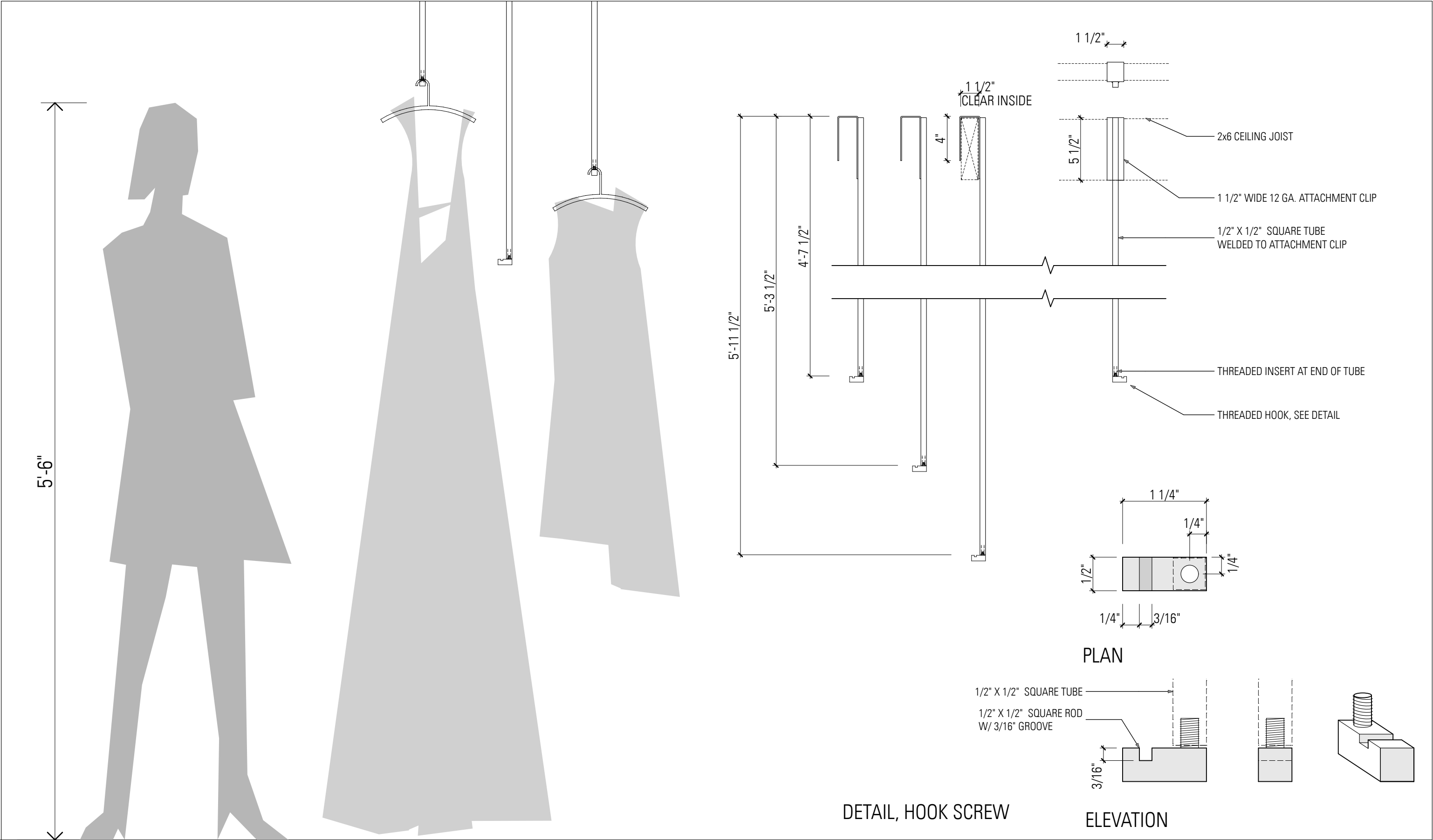
DATE: 2009-06-19

VOITURE12
(323) 702 96 69



POWDER COATED 1/2" SQUARE TUBE
W/ TAPPED THREADED HOLES AT BTM
TO ACCEPT CASTERS



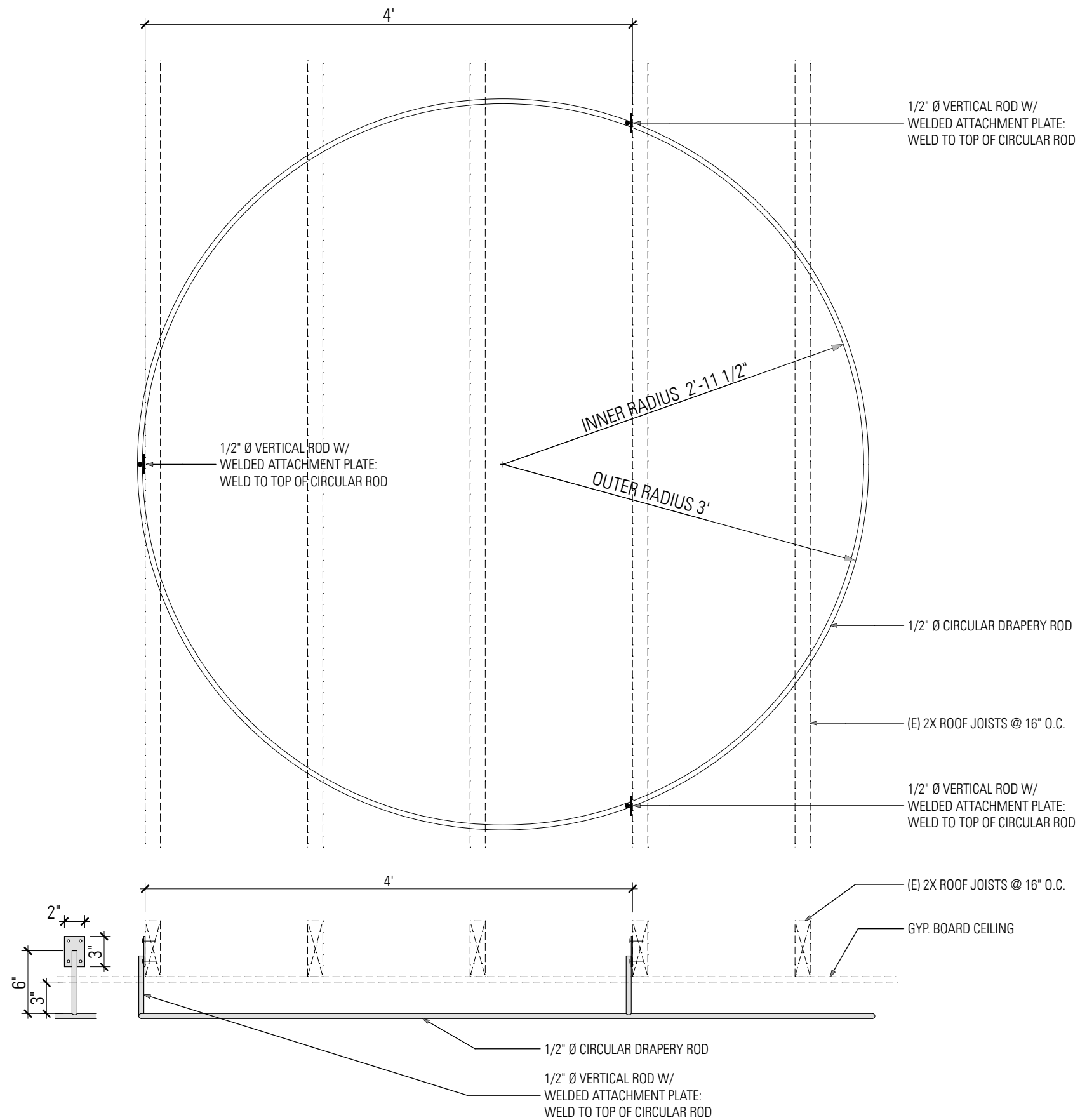


SK 8

DETAIL: CEILING HOOKS, 3 DIFFERENT HEIGHTS, 8 UNITS EACH (24 TOTAL)

SCALE: 1 1/2" = 1'-0", NTS

DATE: 2009-06-19



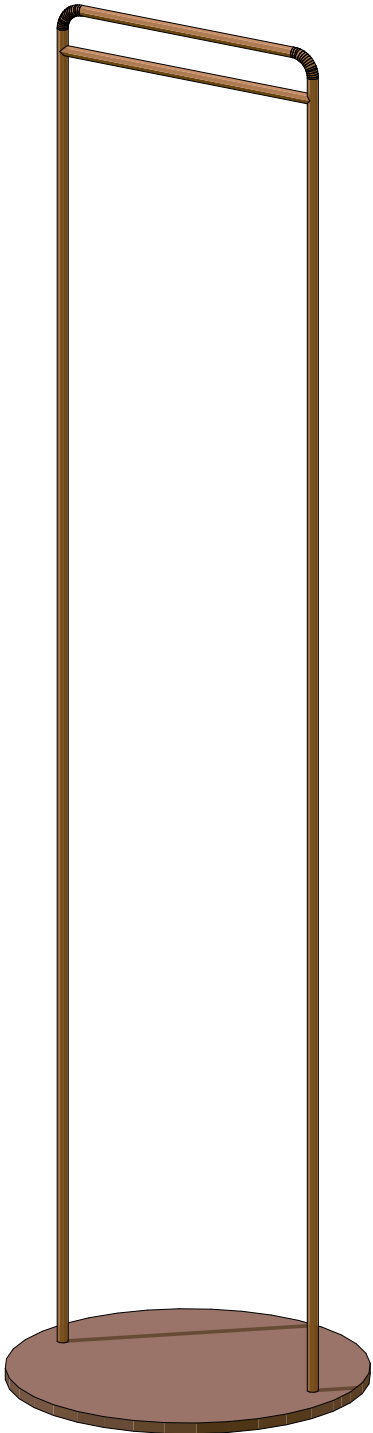
SK 9

DETAIL: FITTING ROOM CURTAIN ROD, 3 UNITS

SCALE: 1" = 1'-0"

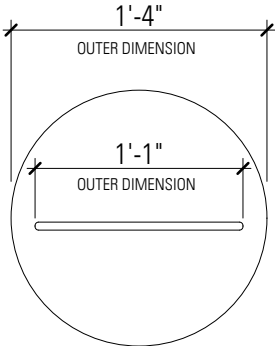
DATE: 2009-06-19

VOITURE 12
(323) 702 96 69

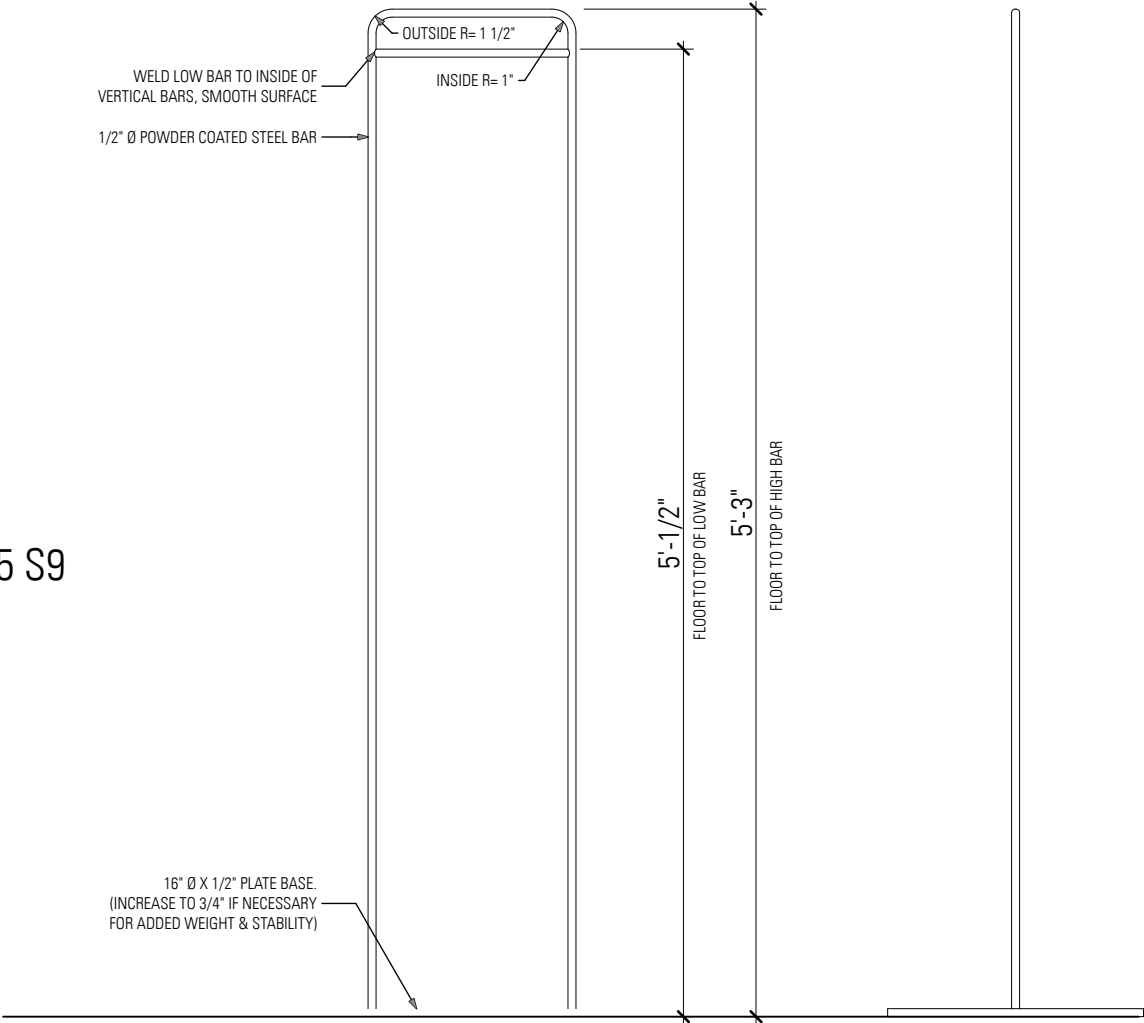


3D VIEW OF STANDING HOOK

POWDER COAT:
Dupont Charlie Brown: UFJ 505 S9

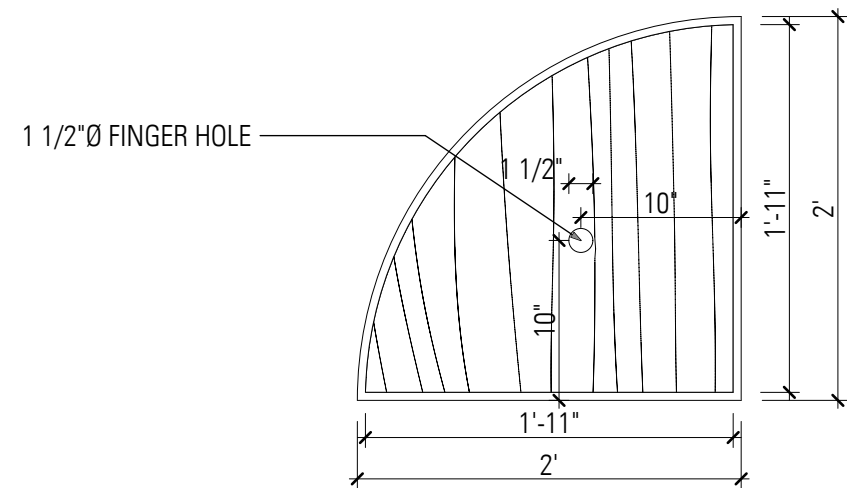


PLAN

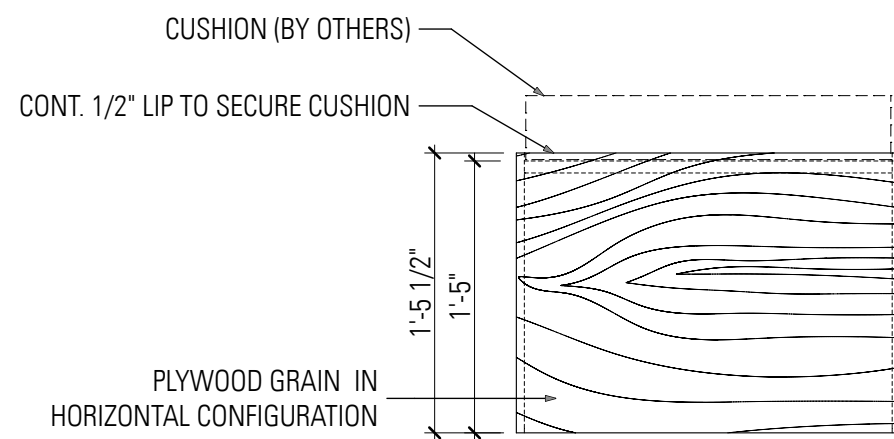


FRONT

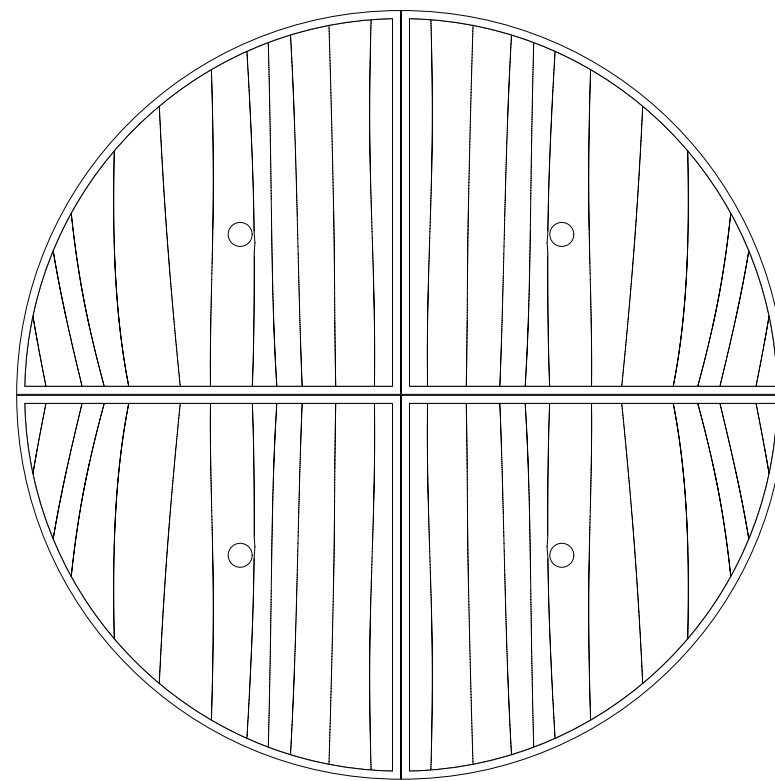
SIDE



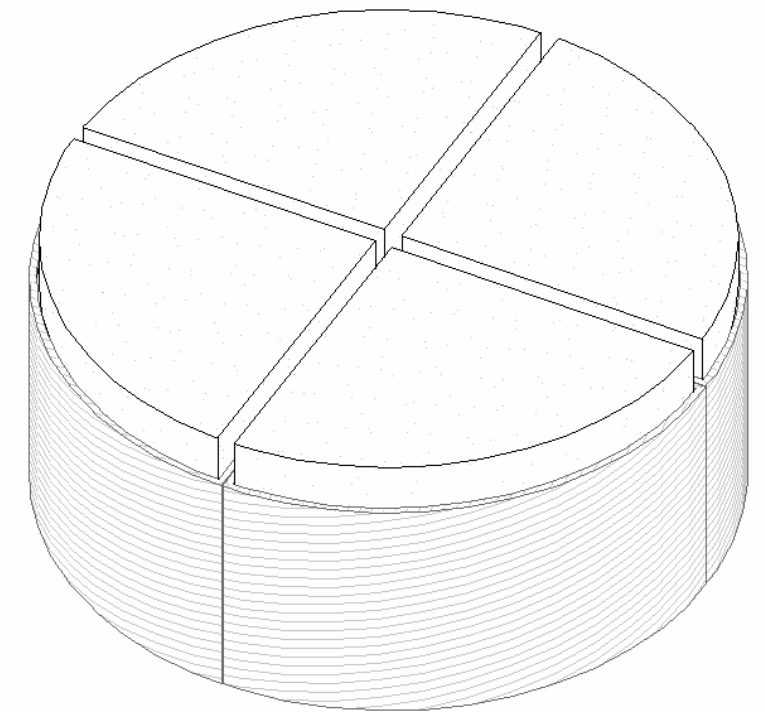
PLAN VIEW



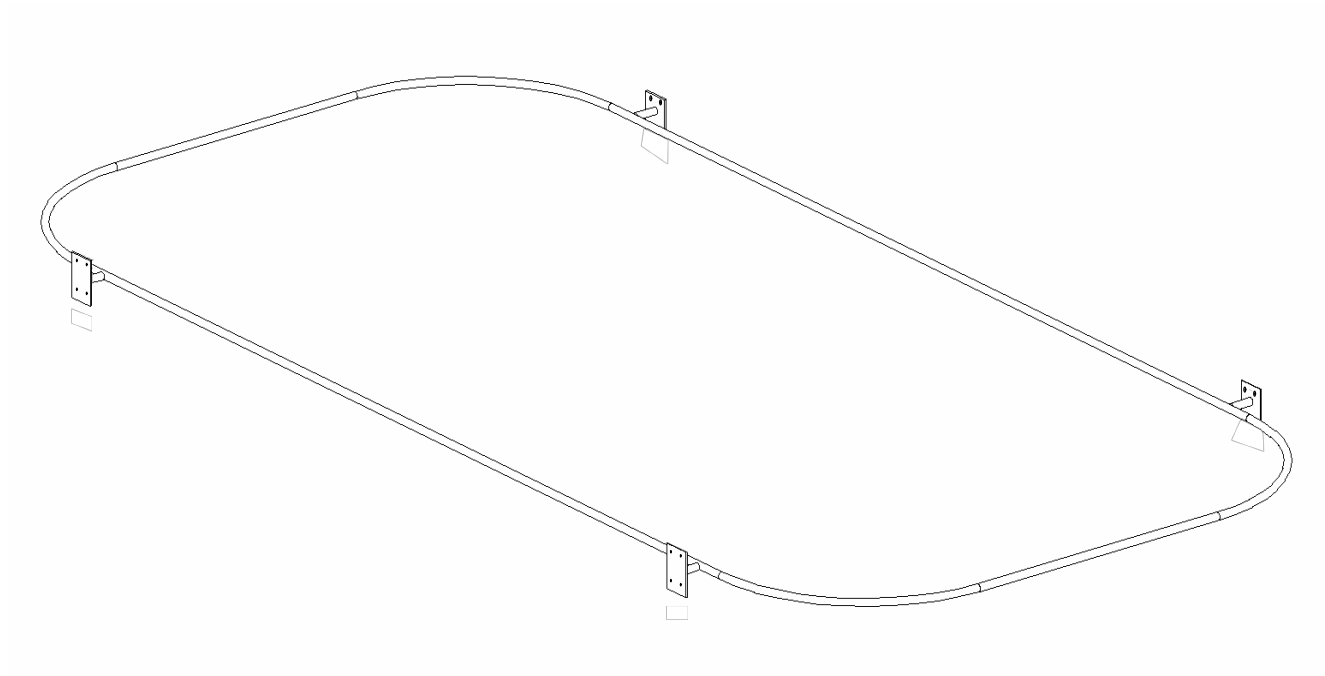
ELEVATION



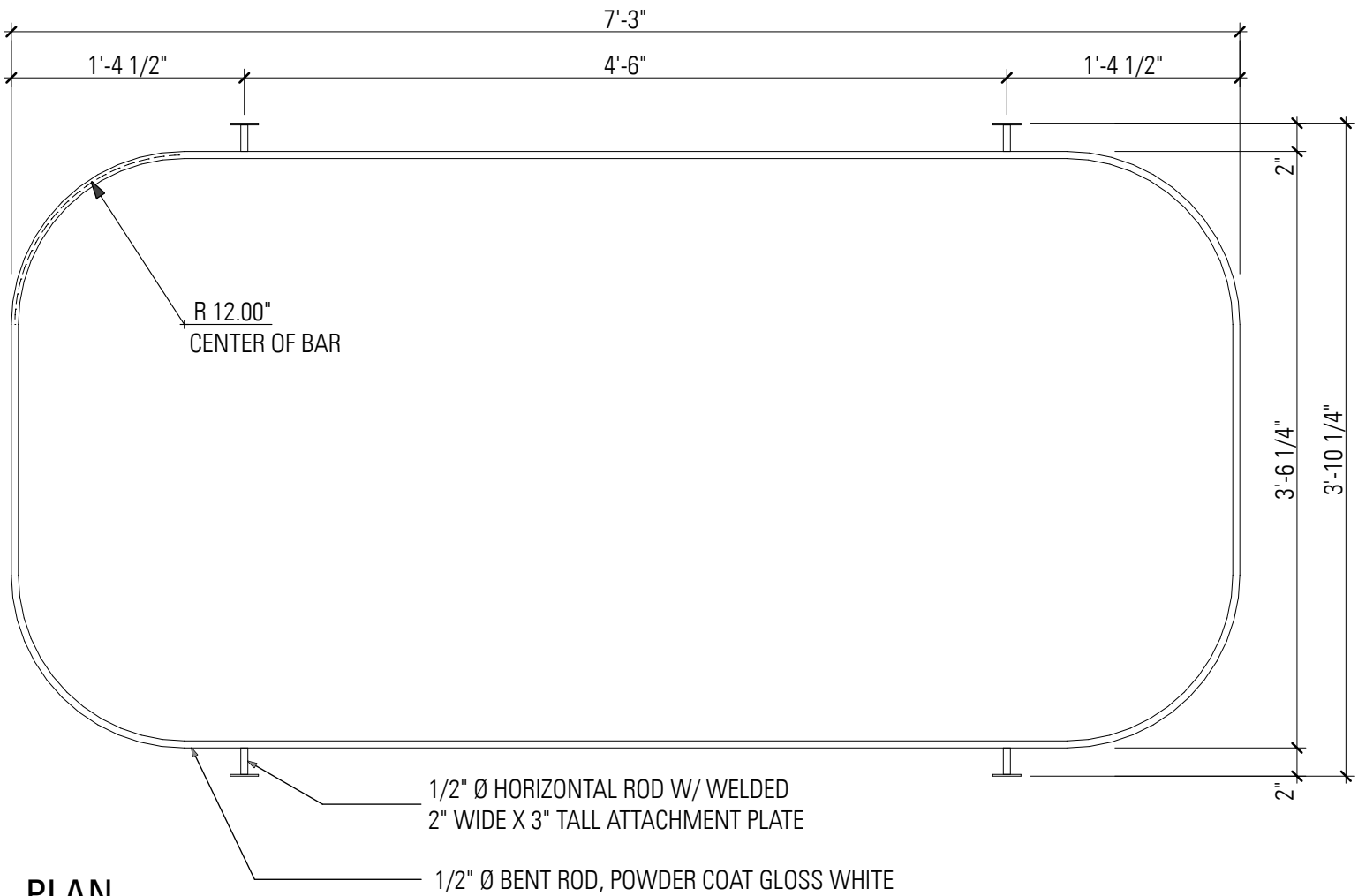
PLAN VIEW OF ASSEMBLED QUARTERS



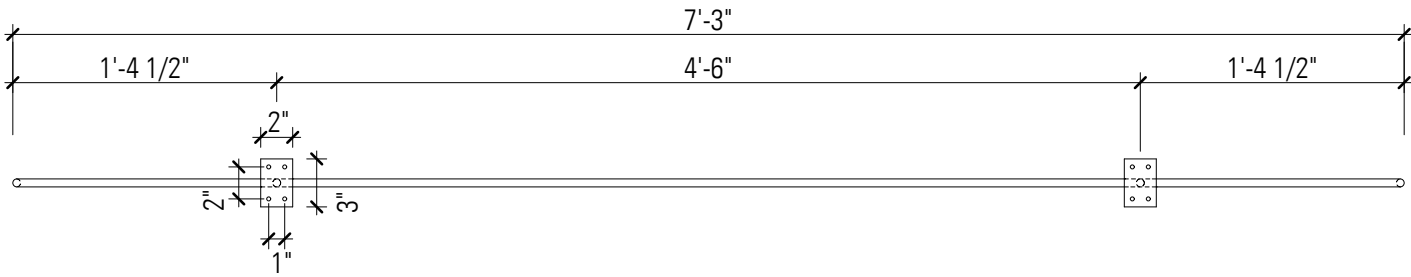
3-D VIEW



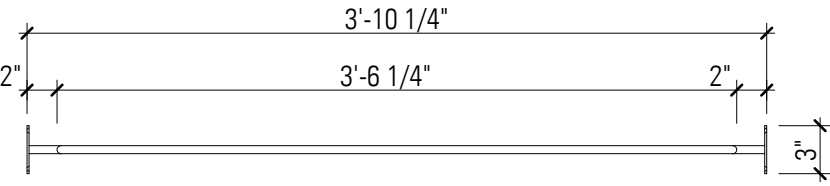
3-D VIEW



PLAN



LONG ELEVATION



SHORT ELEVATION